

OPUS ONE GOLD

The logo for Opus One Gold features the word "OPUS" in a large, gold, serif font at the top. Below it, a magnifying glass with a wooden handle is positioned over a gold coin. The word "ONE" is written in a large, gold, serif font, with the magnifying glass's lens acting as the letter "O". Below "ONE", the word "GOLD" is written in a smaller, black, sans-serif font.

**Corporate presentation
MARCH 2025**

TSX-V:OOR



Forward-Looking Statement

This presentation contains certain “forward-looking statements”, including, but not limited to, statements regarding the Company’s strategic plans, timetables, the evolution of mineral reserves and resources, mine operating costs, capital expenditures, work programs, development plans, exploration programs, objectives, budgets and the possible determination of additional reserves. Forward looking statements express, at this date, the Company’s plans, estimates, forecasts, projections, expectations or beliefs as to future events and results. Forward-looking statements involve a number of risks and uncertainties, and there can be no assurance that such statements will prove to be accurate. Therefore, actual results and future events could differ materially from those anticipated in such statements. Risks and uncertainties that could cause results or future events to differ materially from current expectations expressed or implied by the forward-looking statements include, but are not limited to, factors associated with fluctuations in the market price of metals, mining industry risks, exploration risks, environmental risks and hazards, uncertainty as to calculation of mineral reserves, requirement of additional financing or additional permits, authorizations or licenses, and risks of delays in construction and production.

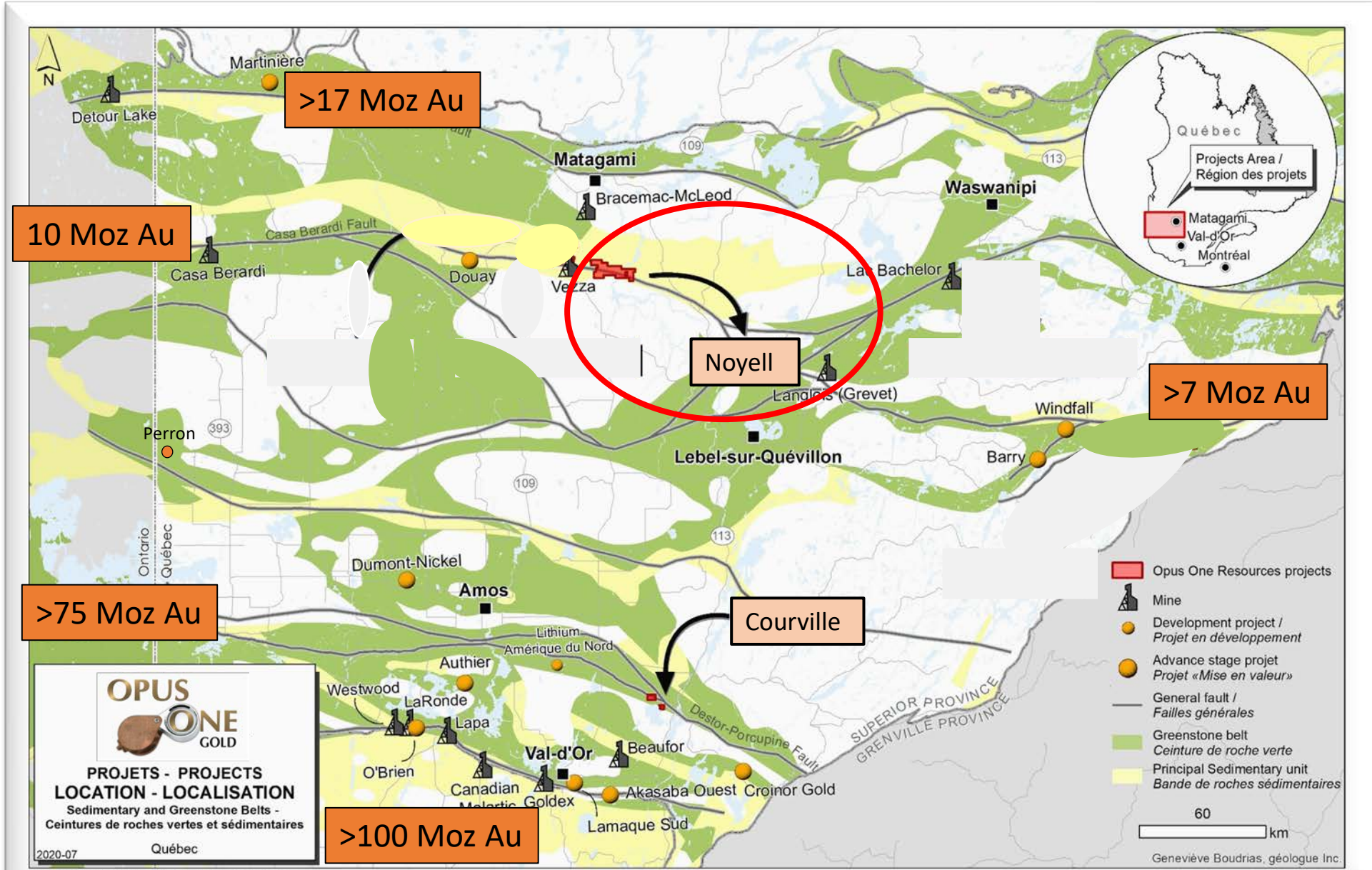


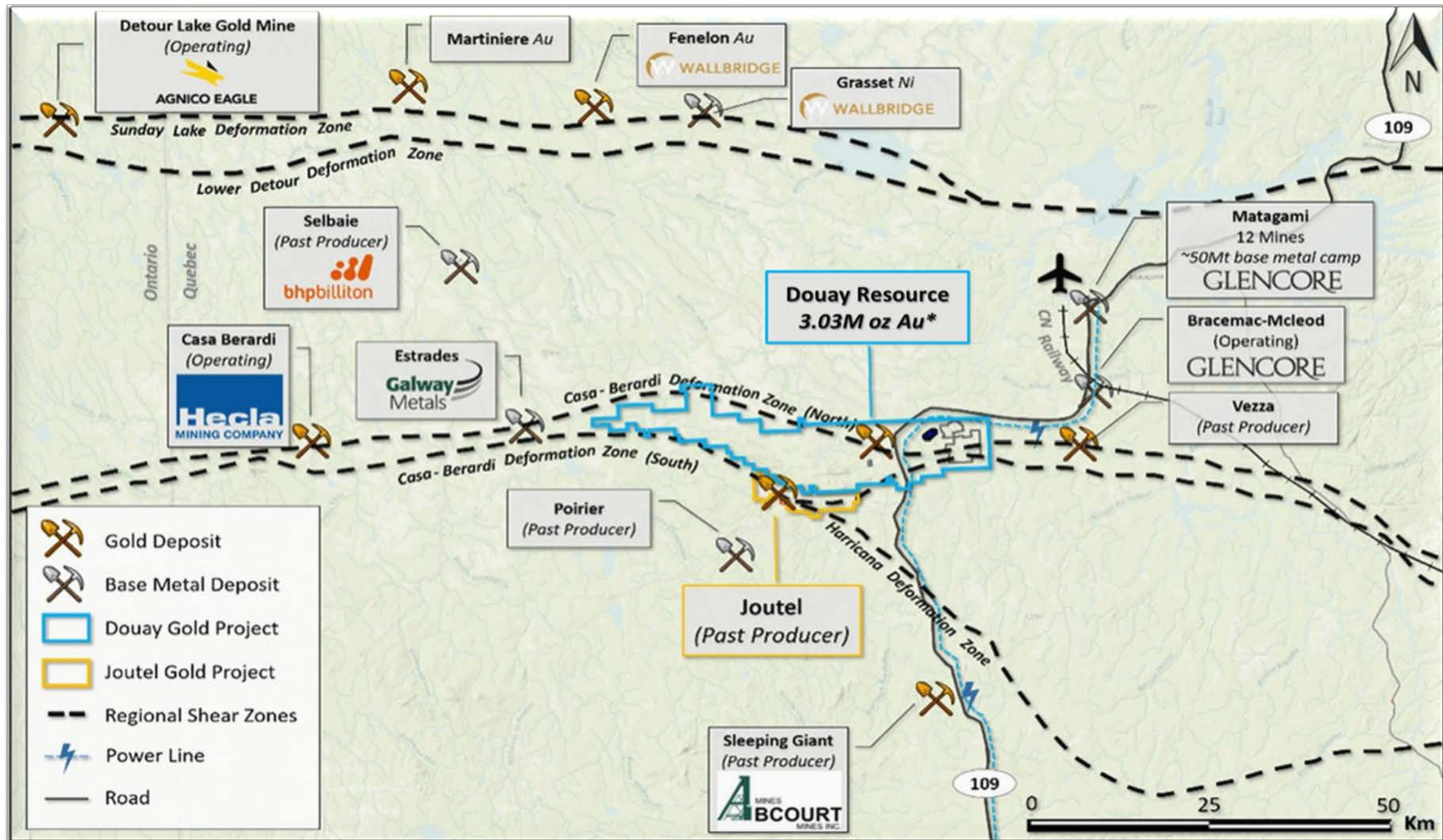
OPUS ONE GOLD CORP HIGHLIGHTS

- **Experience** Highly experienced and successful management and exploration team combining more than 100 years in the mining sector
- **Québec** Extensive portfolio of highly prospective exploration properties located in Quebec. TWO properties qualify to Quebec's Plan North taxes refund program
- **Location** All properties strategically located in proven prospective gold districts, near known gold deposits, easily accessible by good roads.
Near surface exploration = Low-cost exploration
- **Gold and +** Focus on gold
- **Flagship property** **Noyell** (gold), delineation drilling stage on Zone 1
Objective: >1M oz Au Orogenic gold deposit
- **Regional Potential** Recent bio-geochemical survey revealed multiple unexplored gold targets over several kilometres of 100% owned, royalty free favourable ground
-



OPUS ONE GOLD PROPERTIES

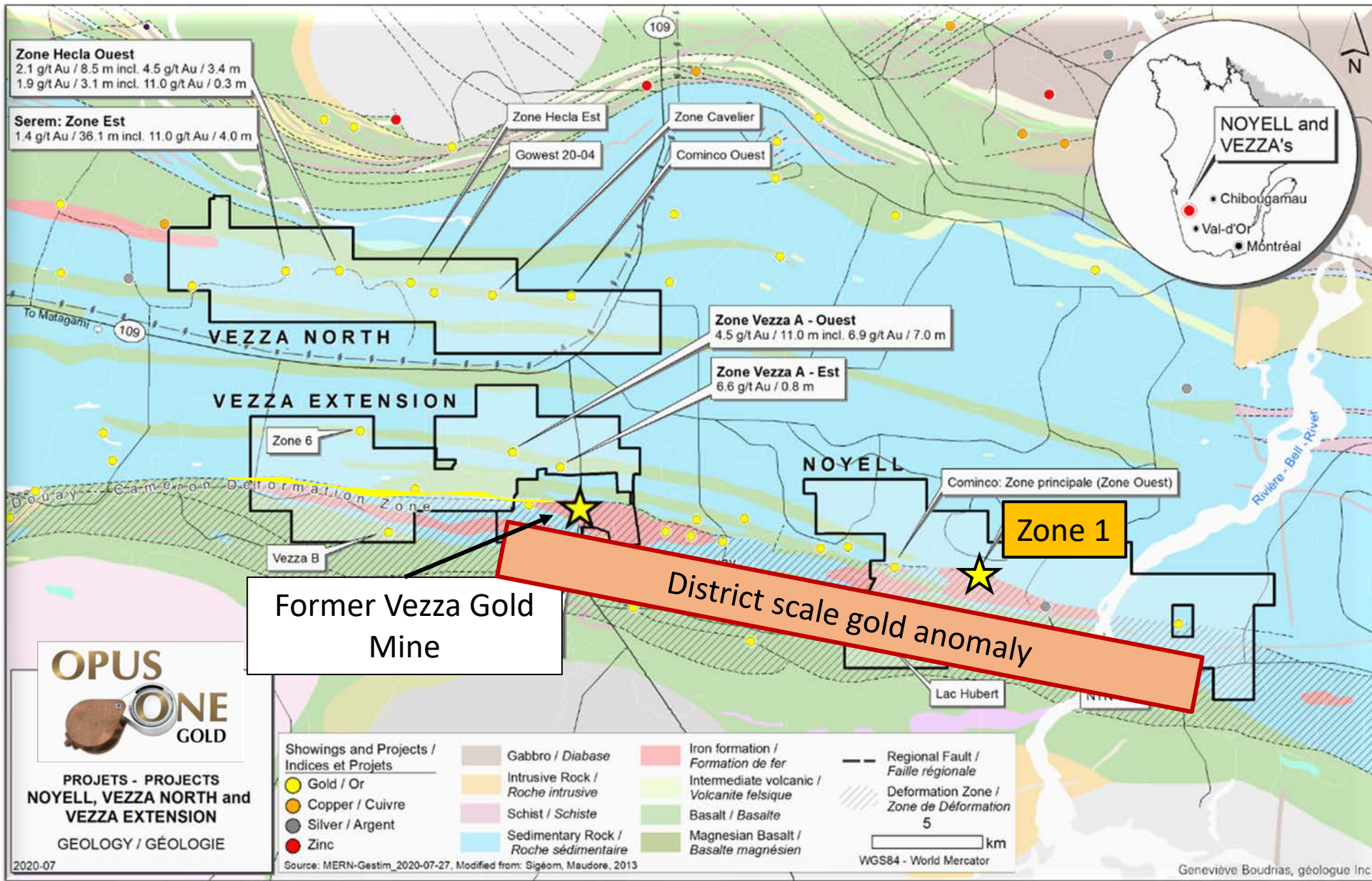




RECENT DEVELOPMENTS

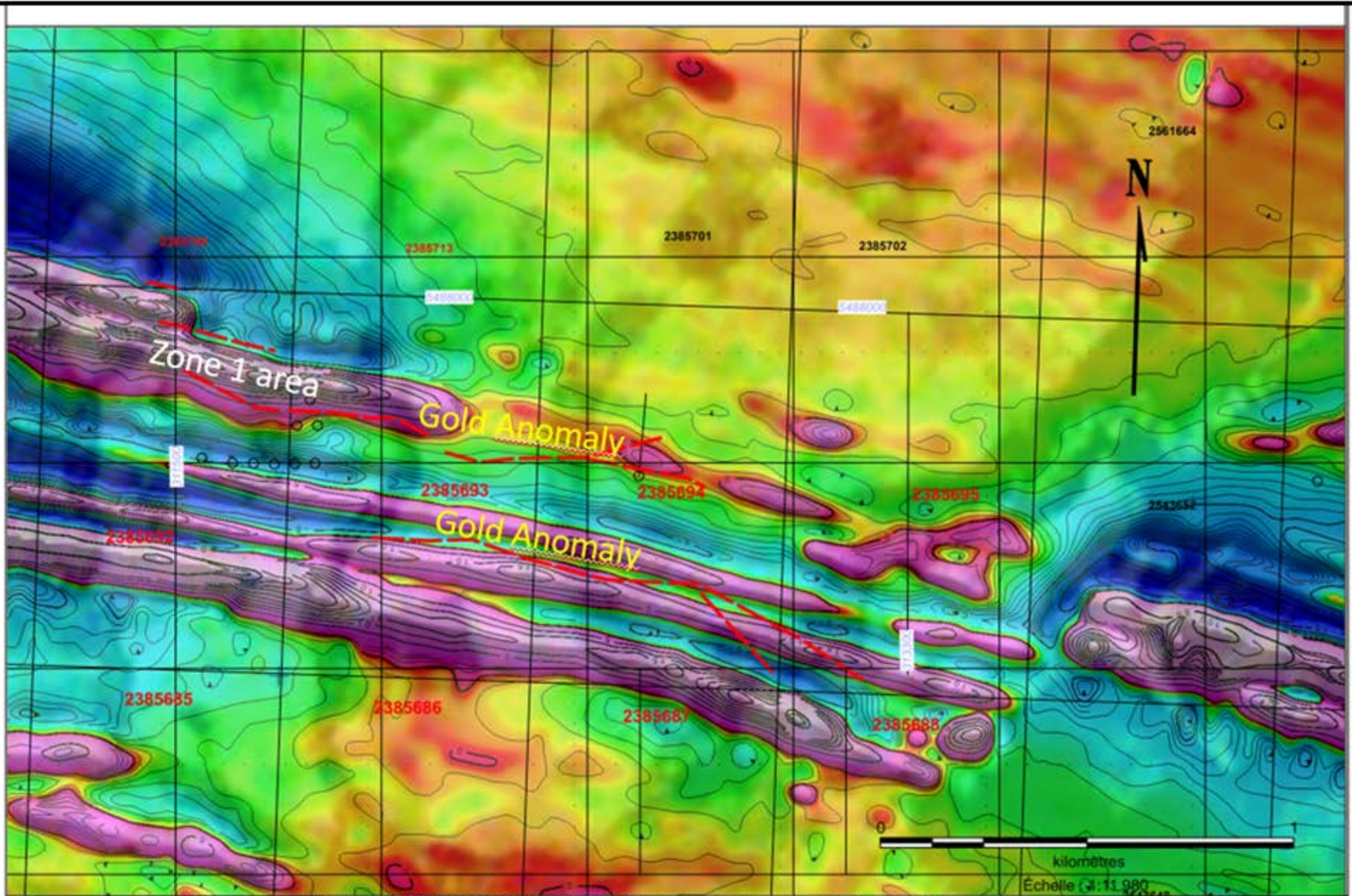
- **Acquisition of 100% ownership of Noyell flagship Gold Project.**
- **7200 Meters ongoing 2025 drill program** following completion of a 5,104 m winter 2021 drilling program on Noyell with significant success following up on 2020 spectacular drilling results.
- Definition and extension of Zone 1 on Noyell property.
- Opus One controls 10 km of strike along two highly favorable deformation corridors: Casa Berardi and Douay-Cameron.
- Bio-geochemical survey on Noyell over the Zone 1 discovery and its extensions: results are confirmation of regional scale gold district potential.





Vezza Mine – Regional Geology





Gold Anomalies
over Mag Survey

CORPORATION AURIFERE OPUS ONE

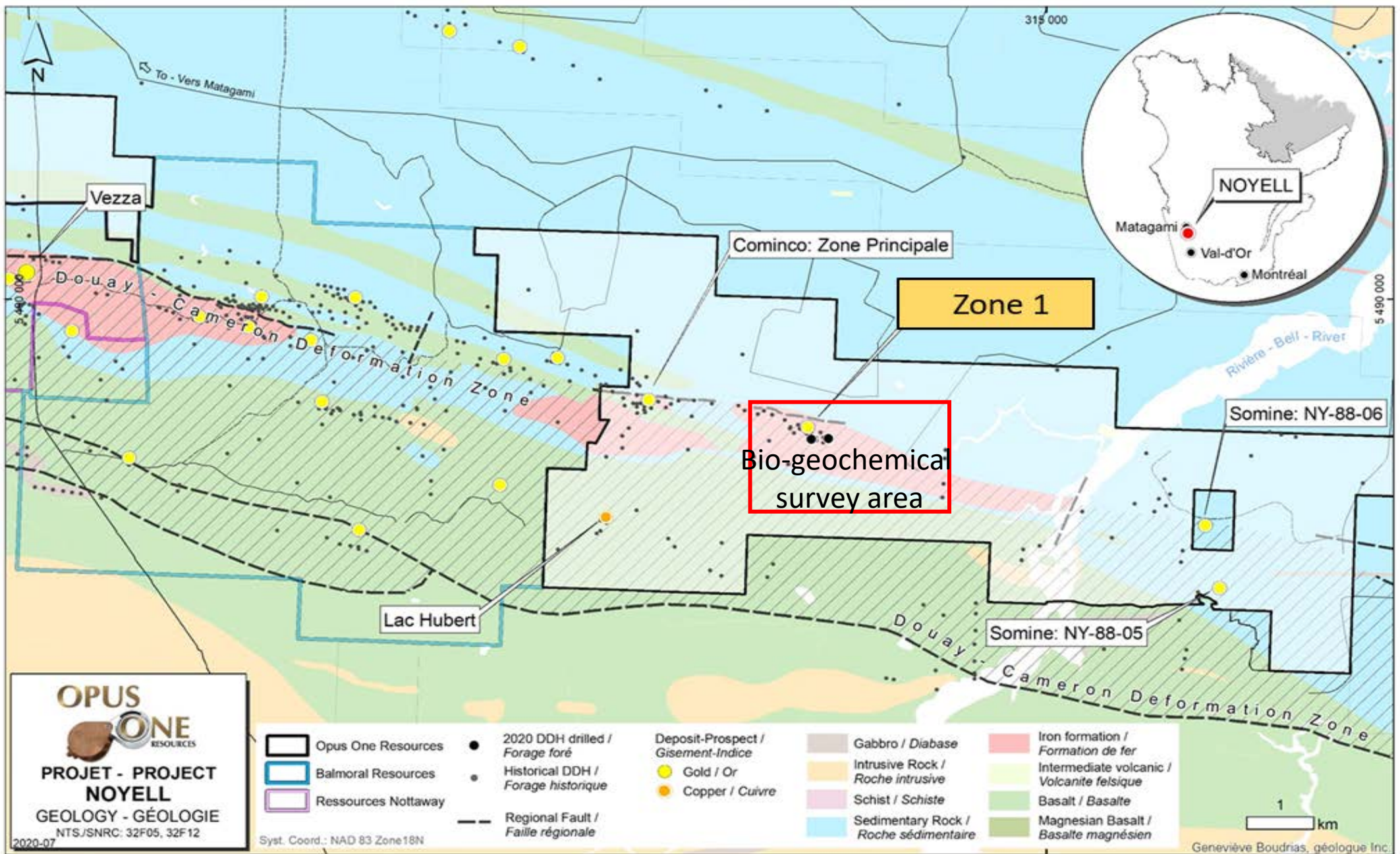
PROPRIÉTÉ NOYELL 32 F12

LEVÉ DE BIO GÉOCHIMIE
Axes des anomalies Au

Projection utm nad 83 Z18
déc 2023

G.L. GÉOSERVICE INC.





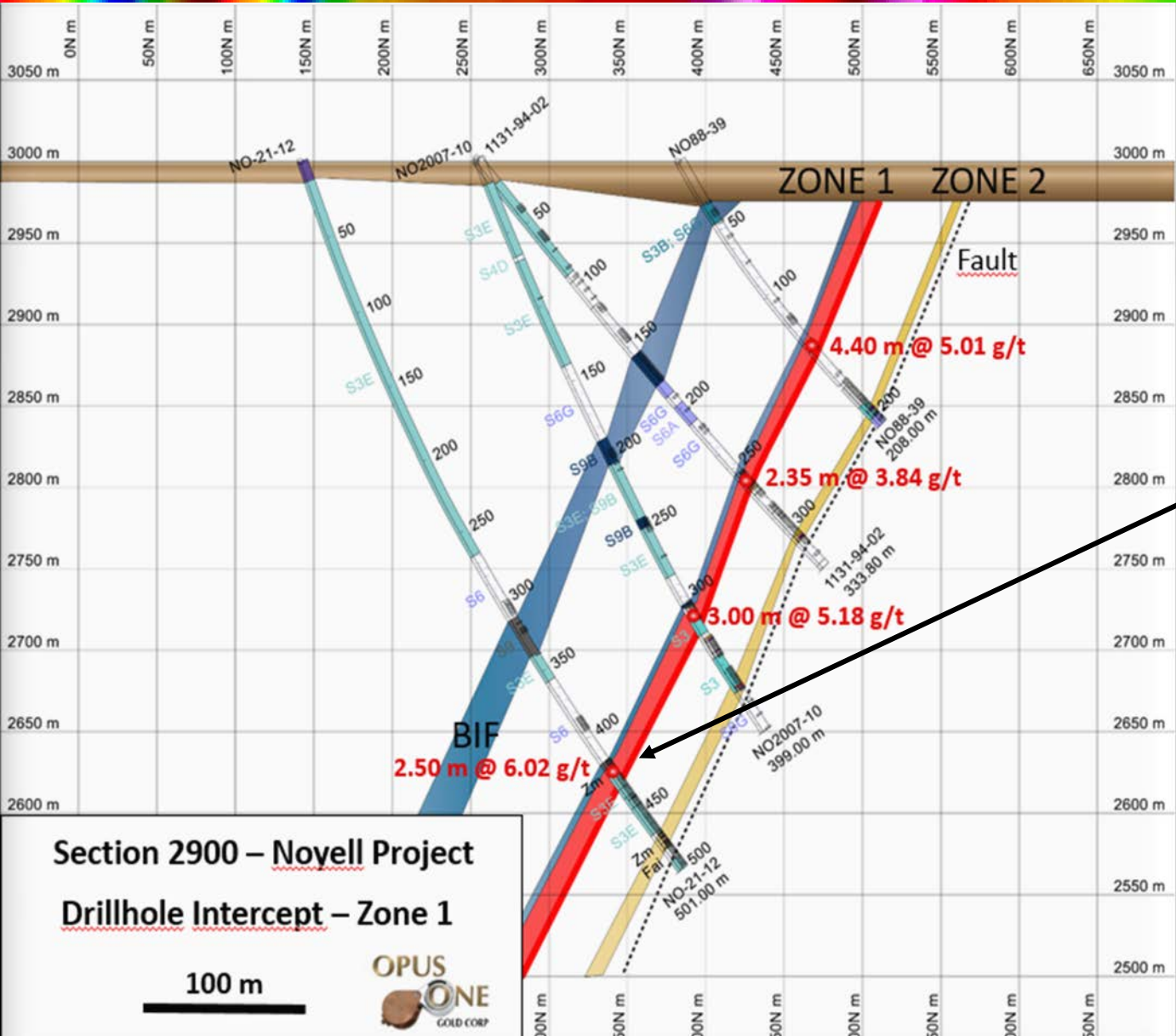
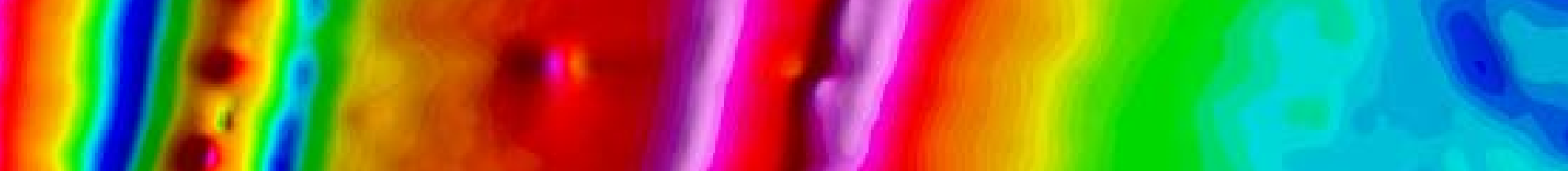
OPUS ONE
RESOURCES

PROJET - PROJECT NOYELL
GEOLOGY - GÉOLOGIE
NTS/SNRC: 32F05, 32F12
2020-07

Opus One Resources	2020 DDH drilled / Forage foré	Gold / Or	Gabbro / Diabase	Iron formation / Formation de fer
Balmoral Resources	Historical DDH / Forage historique	Copper / Cuivre	Intrusive Rock / Roche intrusive	Intermediate volcanic / Volcanite felsique
Ressources Nottaway	Regional Fault / Faille régionale		Schist / Schiste	Basalt / Basalte
			Sedimentary Rock / Roche sédimentaire	Magnesian Basalt / Basalte magnésien

Syst. Coord.: NAD 83 Zone18N

Geneviève Boudrias, géologue Inc.

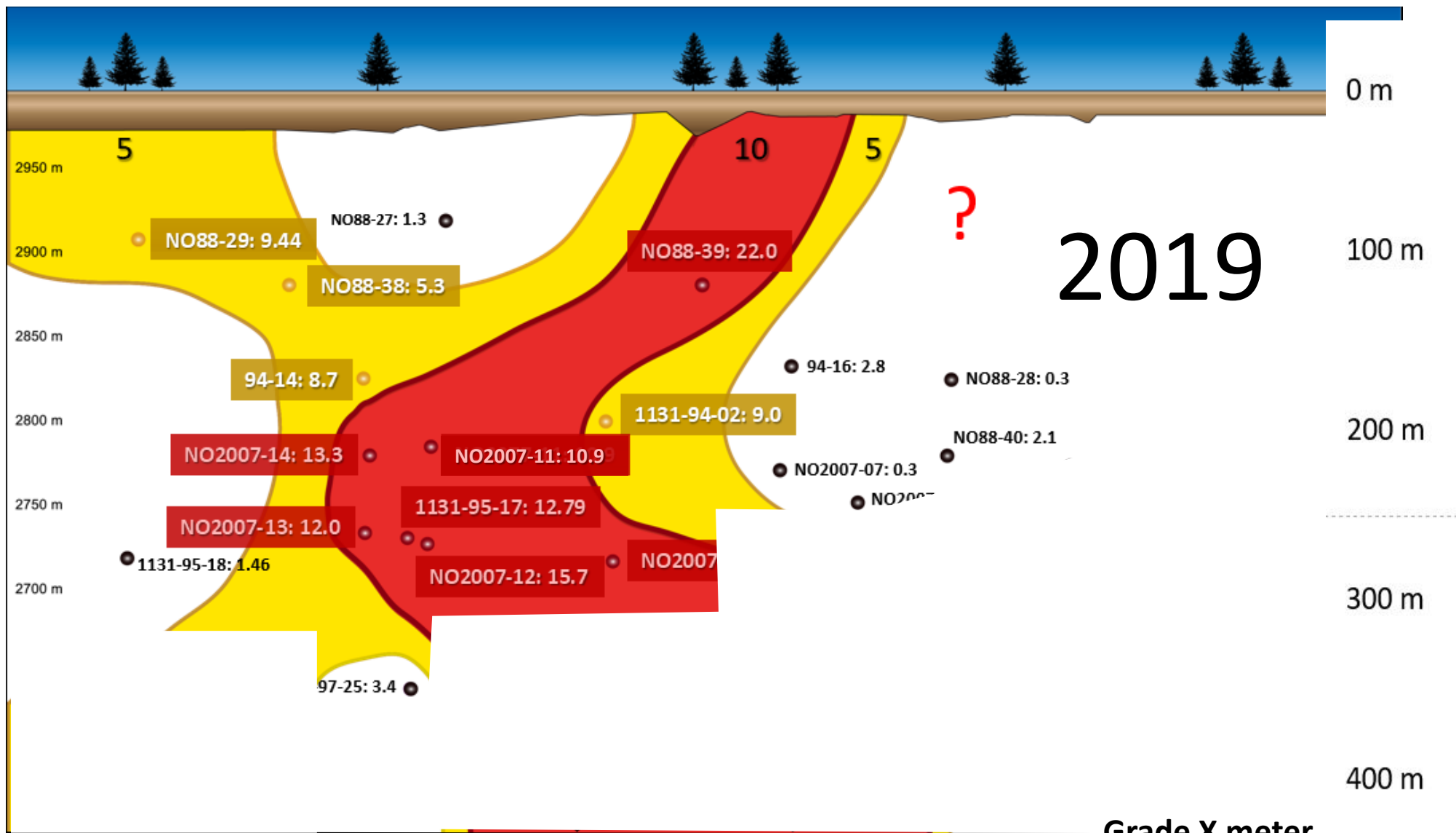


Zone 1: details of intercepts with Metal Factor >10

DDH	From	To	length m	g/t Au	Met. Factor	DDH	From	To	length m	g/t Au	Met. Factor	DDH	From	To	length m	g/t Au	Met. Factor
88-39	140,4	144,8	4,40	5,01	22	2007-13	286,3	291,5	5,20	2,30	12	NO-21-04	421,0	424,5	3,50	4,84	16,9
	140,4	141,3	0,90	15,95			286,3	286,8	0,50	19,97			421,0	421,5	0,50	3,56	
	141,3	142,0	0,70	1,60			286,8	288,0	1,20	0,25			421,5	422,0	0,50	4,00	
	142,0	142,5	0,50	3,44			288,0	289,0	1,00	0,03			422,0	422,5	0,50	21,00	
	142,5	143,4	0,90	0,19			289,0	290,0	1,00	0,06			422,5	423,0	0,50	2,11	
	143,4	144,8	1,40	3,33			290,0	291,0	1,00	0,03			423,0	423,5	0,50	0,32	
95-17	282,5	287,0	4,50	2,82	12,6		291,0	291,5	0,50	3,14			423,5	424,0	0,50	1,49	
	282,5	283,1	0,60	3,37		2007-14	255,2	260,0	4,80	2,77	13,3		424,0	424,5	0,50	1,40	
	283,1	284,6	1,50	0,74			255,2	256,0	0,80	4,66		NO-21-05	421,8	424,5	2,70	6,27	16,4
	284,6	285,3	0,70	0,65			256,0	257,0	1,00	0,02			421,8	422,3	0,50	2,07	
	285,3	286,0	0,70	9,84			257,0	258,0	1,00	0,07			422,3	423,0	0,70	4,96	
	286,0	287,0	1,00	1,65			258,0	258,8	0,80	0,02			423,0	424,0	1,00	3,75	
2007-10	312,0	315,0	3,00	5,26	16		258,8	259,3	0,50	11,83			424,0	424,5	0,50	17,36	
	312,0	312,6	0,55	4,81			259,3	260,0	0,70	5,08		NO-21-06	404,0	410,5	6,50	4,47	29,1
	312,6	313,0	0,45	0,03		NO-20-01	374,6	381,1	6,50	2,05	13,3		404,0	404,5	0,50	2,57	
	313,0	313,5	0,50	5,45			374,6	375,8	1,20	6,76			404,5	405,0	0,50	17,80	
	313,5	314,0	0,50	11,01			375,8	377,0	1,20	0,02			405,0	405,6	0,60	4,84	
	314,0	314,5	0,50	3,46			377,0	378,2	1,20	0,23			405,6	406,7	1,10	0,05	
	314,5	315,0	0,50	6,34			378,2	379,5	1,30	0,08			406,7	407,2	0,50	0,15	
2007-11	247,7	250,0	2,30	4,74	10,9		379,5	380,3	0,80	3,49			407,2	408,1	0,90	0,03	
	247,7	248,2	0,50	5,00			380,3	381,1	0,80	2,50			408,1	408,7	0,60	0,10	
	248,2	248,7	0,50	3,78		NO-20-02	294,9	306,1	11,20	3,54	39,6		408,7	409,5	0,80	0,07	
	248,7	249,2	0,50	11,52			294,9	296,2	1,30	4,22			409,5	410,0	0,50	18,00	
	249,2	250,0	0,80	0,93			296,2	297,5	1,30	1,57			410,0	410,5	0,50	13,35	
2007-12	282,8	286,5	3,70	4,25	15,7		297,5	299,0	1,50	0,06		NO-21-12	425,5	428,0	2,50	6,02	15,2
	282,8	283,5	0,70	14,66			299,0	300,5	1,50	4,96			425,5	426,0	0,50	0,52	
	283,5	285,0	1,50	0,30			300,5	301,6	1,10	12,45			426,0	426,6	0,60	0,04	
	285,0	286,5	1,50	3,34			301,6	302,7	1,10	7,55			426,6	427,2	0,60	22,74	
							302,7	303,6	0,90	0,20			427,2	428,0	0,80	1,40	
							303,6	304,5	0,90	0,03							
							304,5	304,9	0,40	3,89							
							304,9	305,8	0,90	0,01							
							305,8	306,1	0,30	2,88							

**Metal Factor: grade X length
10 approx. economic limit**





Longitudinal Section – Metal Factor

Novell Project – Zone 1

100 m



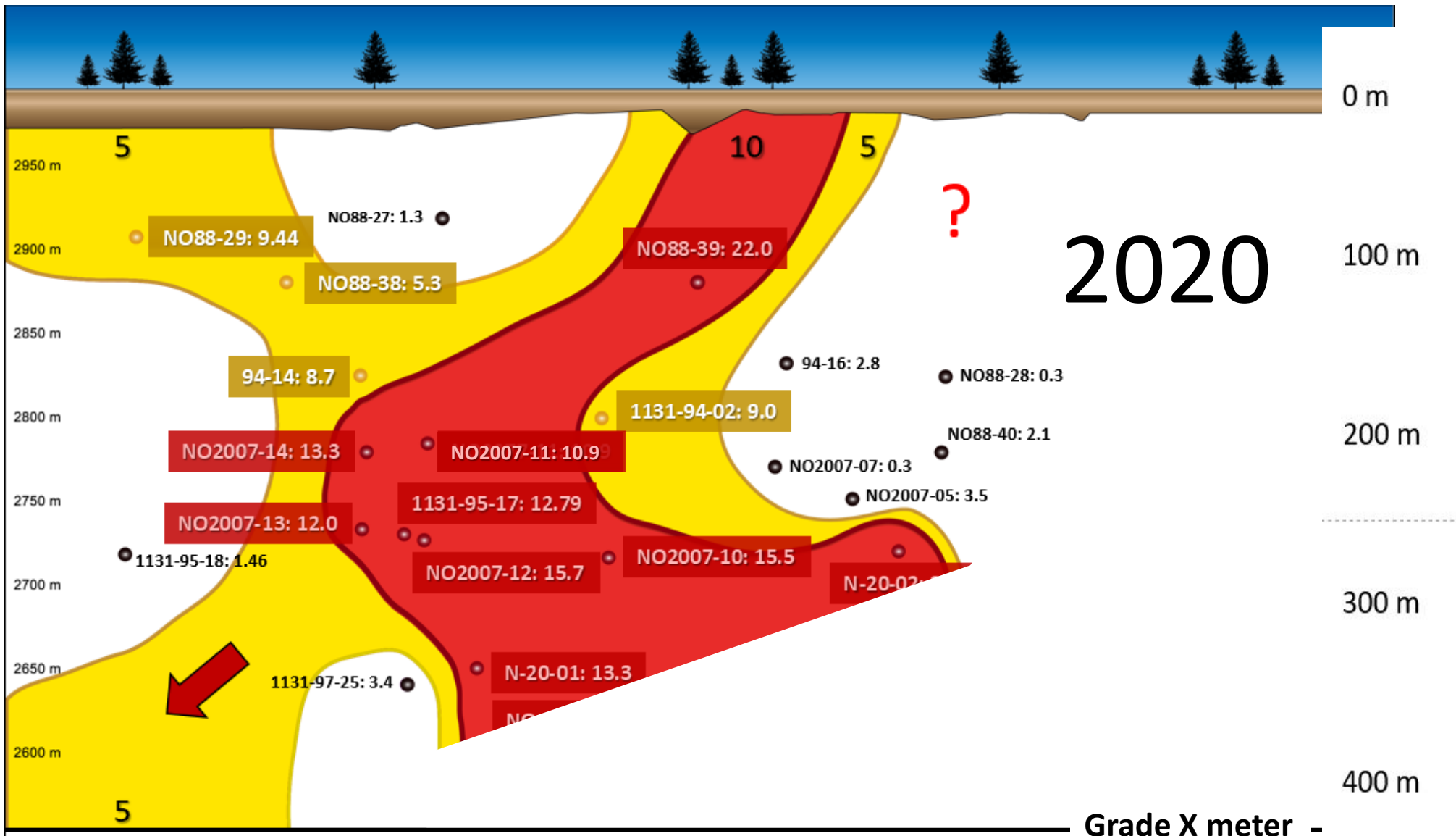
Grade X meter

METAL FACTOR

● > 5

● > 10

500 m



Longitudinal Section – Metal Factor

Novell Project – Zone 1

100 m



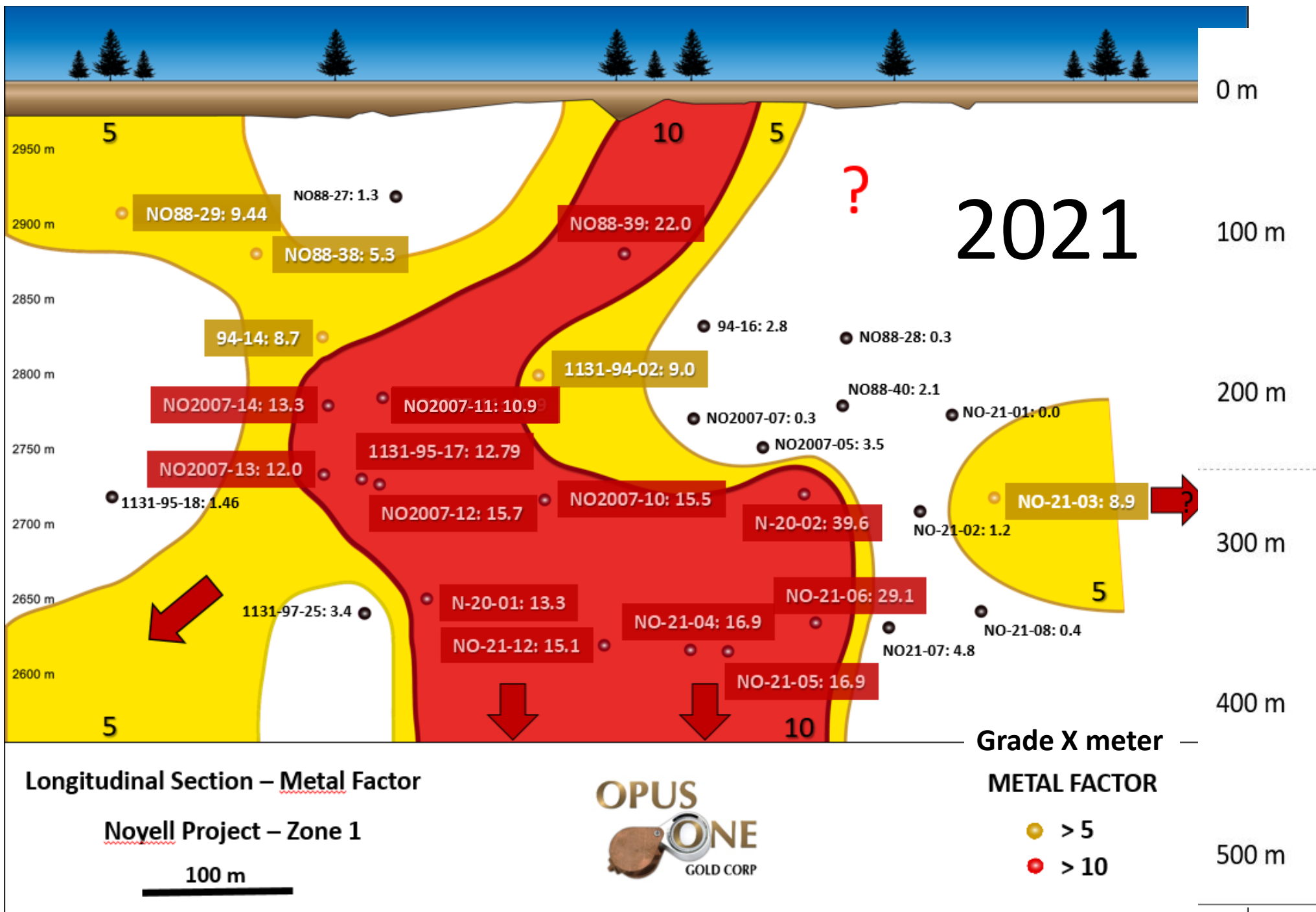
Grade X meter -

METAL FACTOR

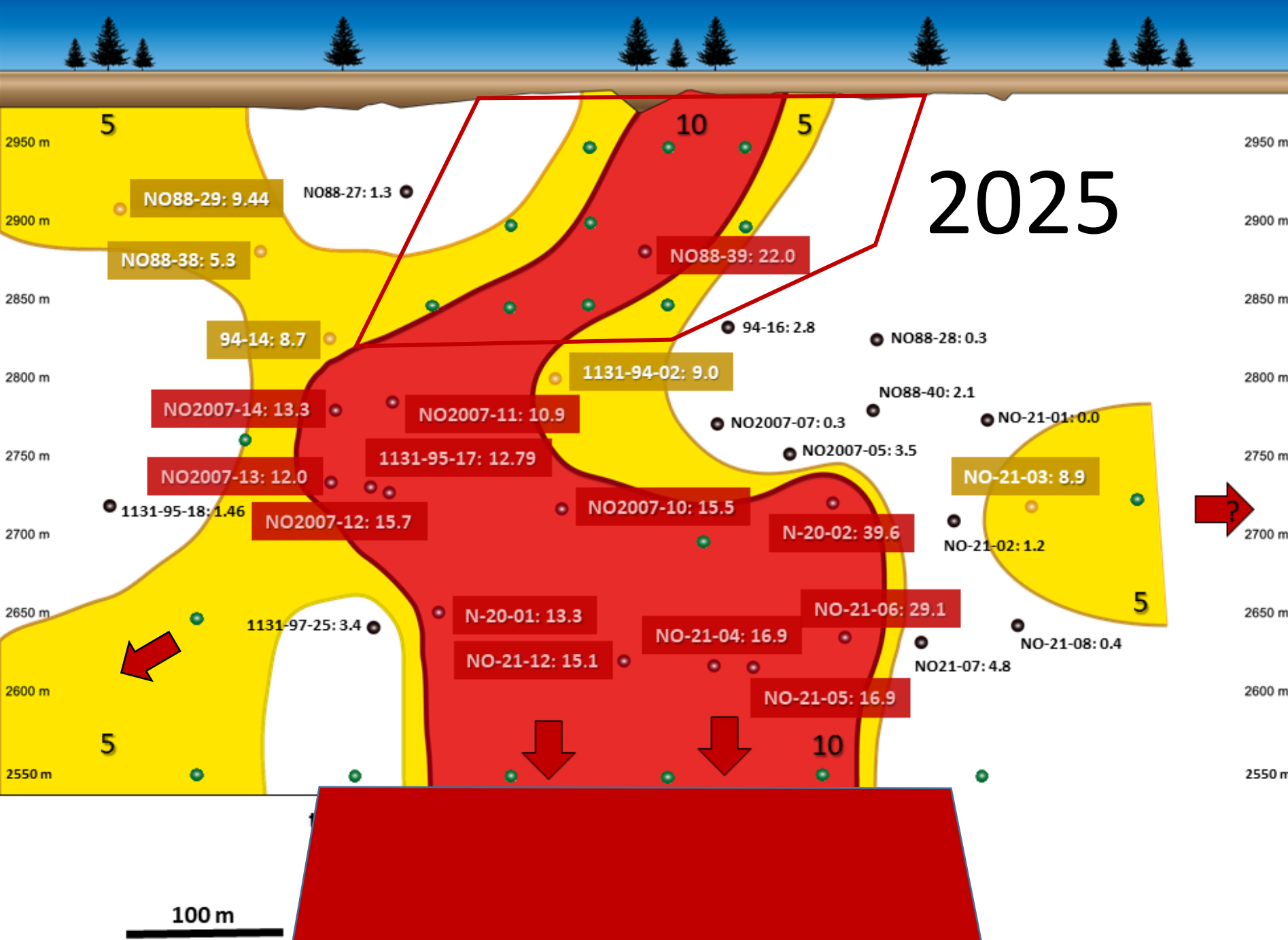
● > 5

● > 10

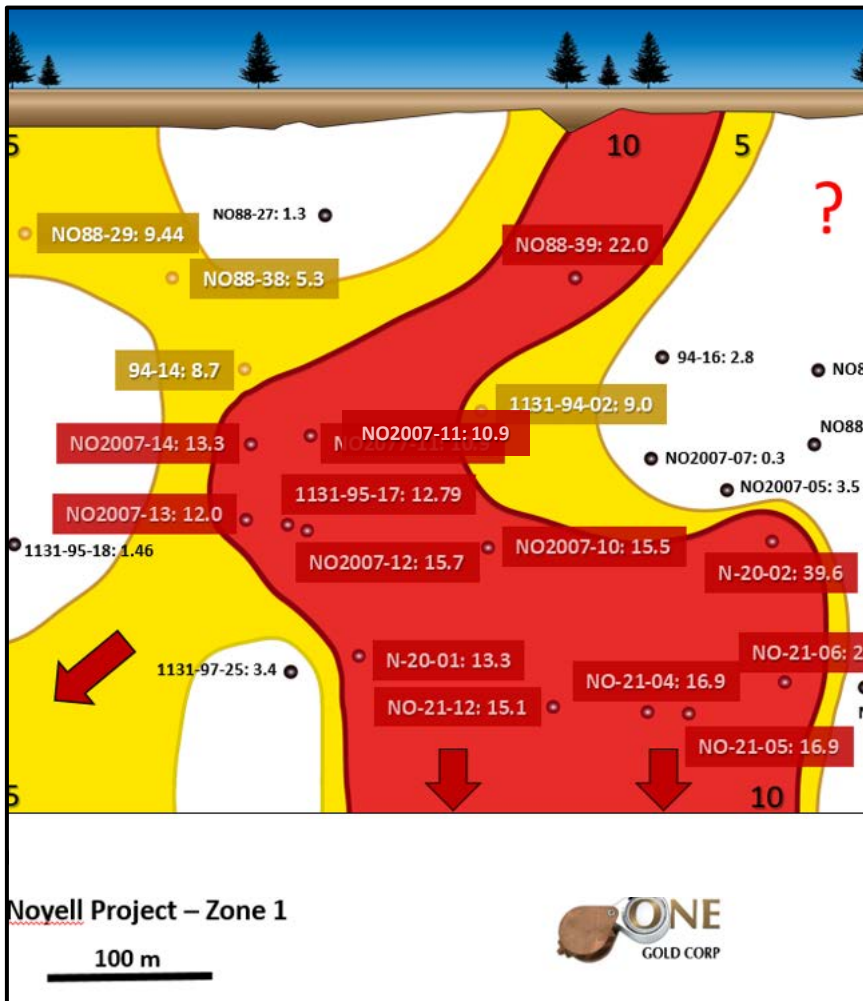
500 m



2025

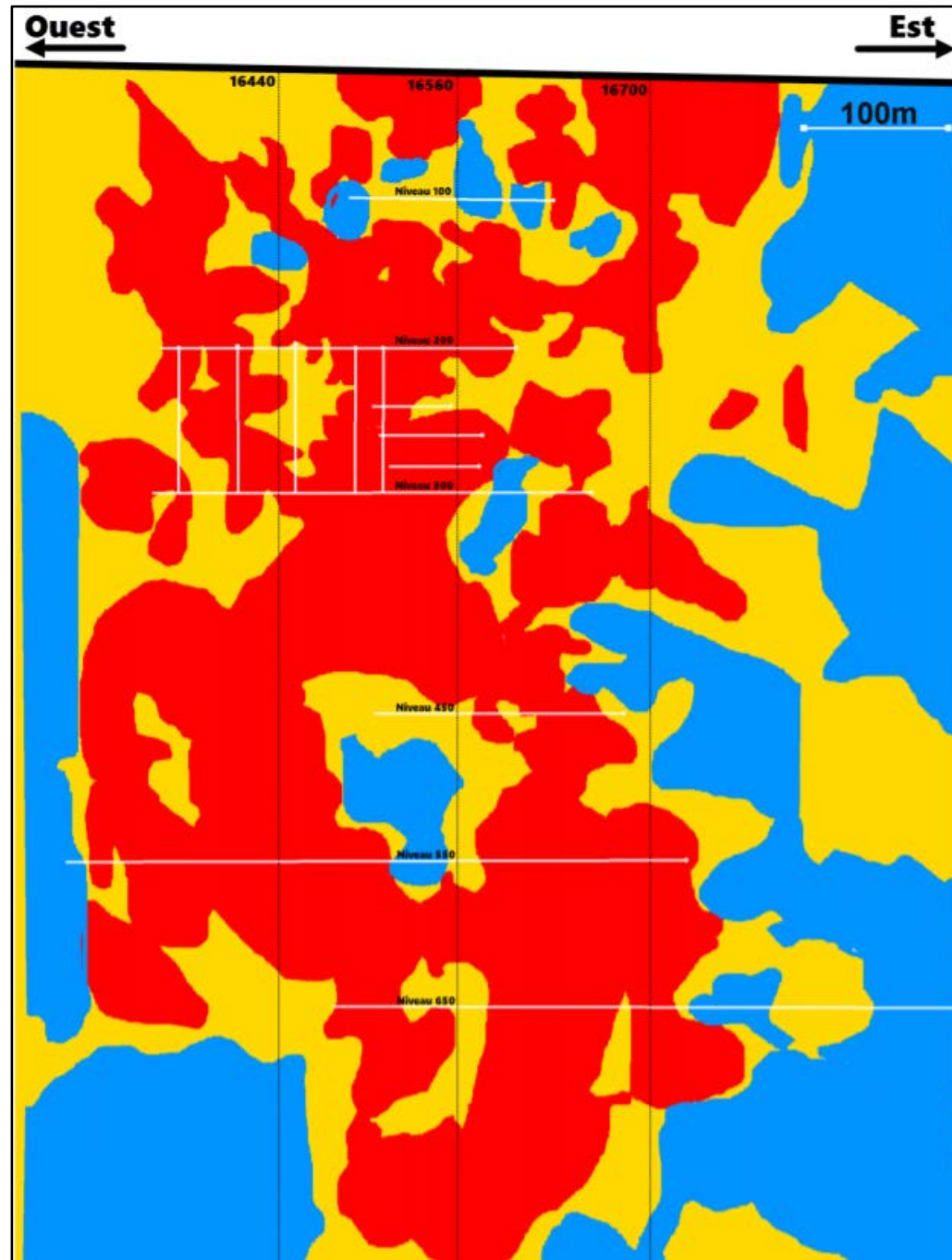


0 m
100 m
200 m
300 m
400 m
500 m



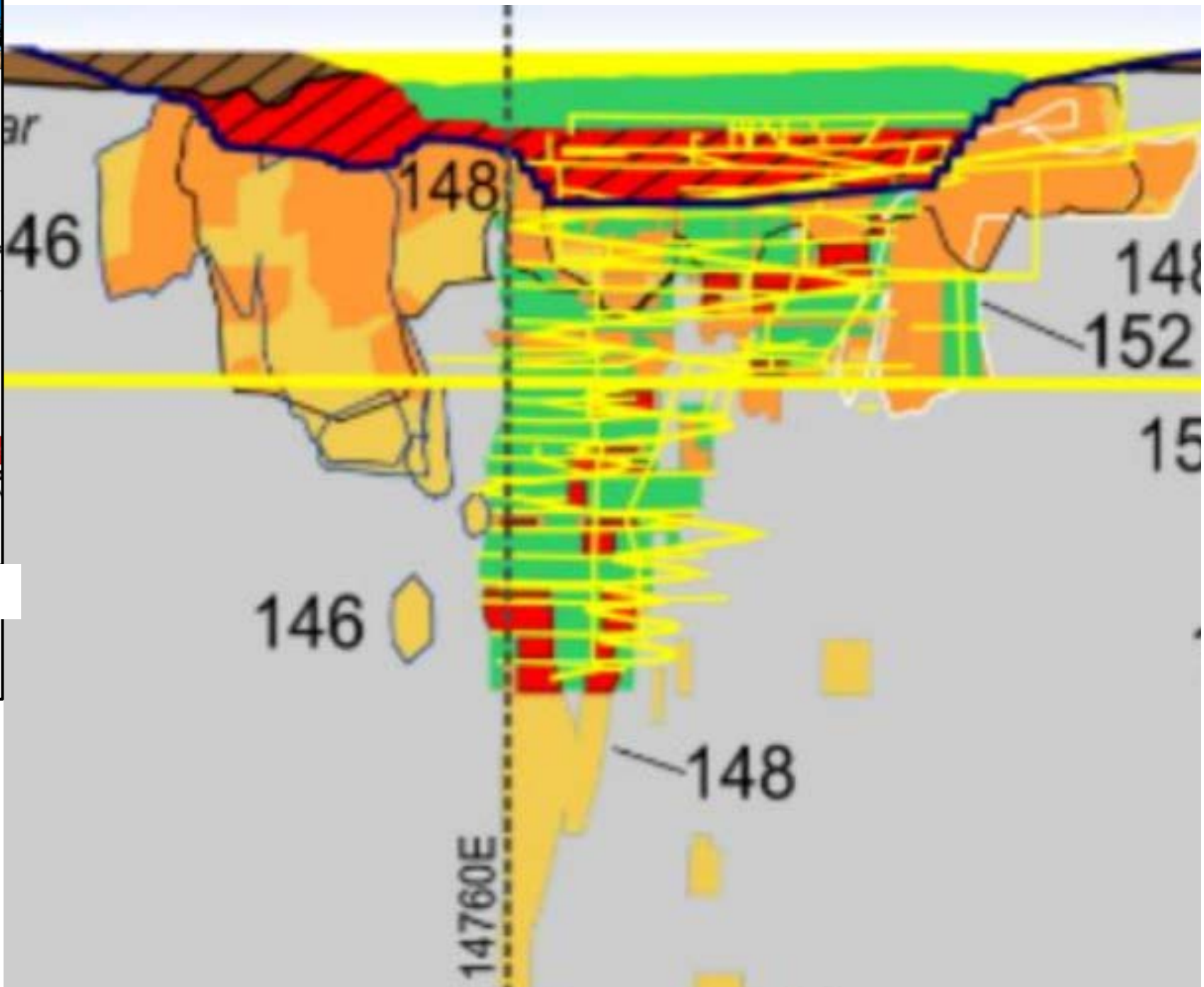
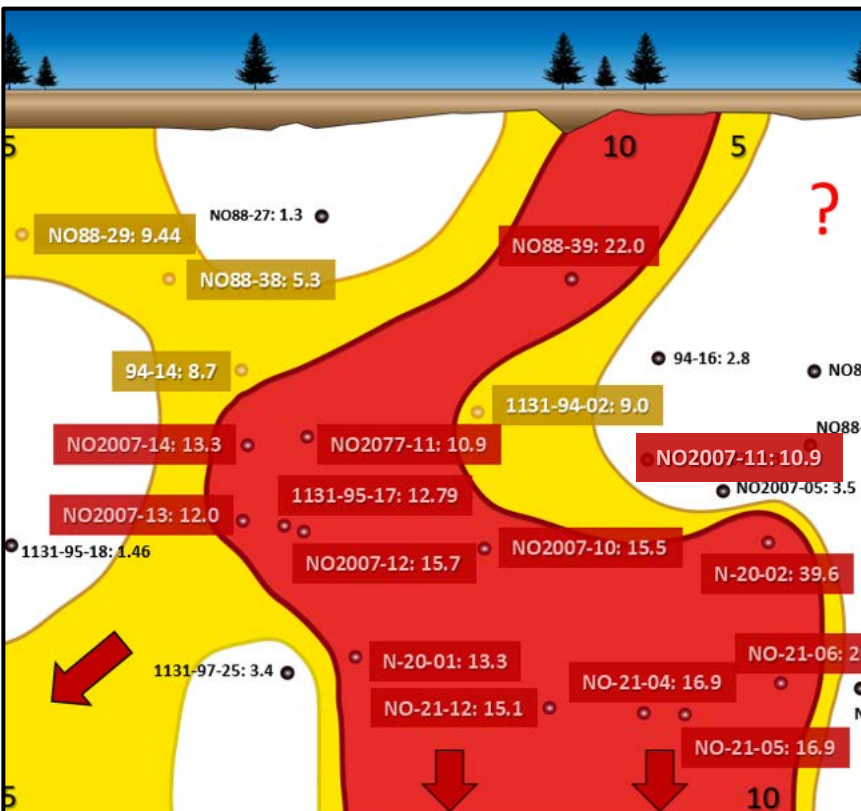
Noyell vs Vezza Mine

Approx. same scale



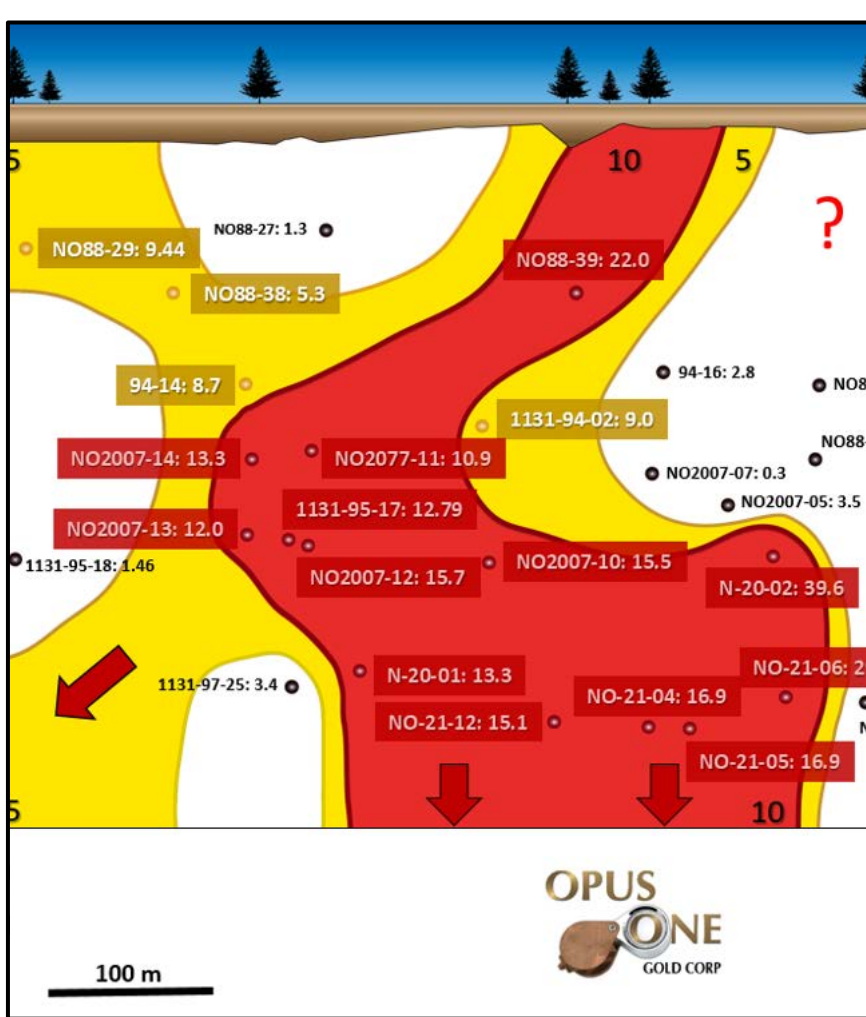
650 m





Noyell vs Casa Bérardi Est mine (Hecla)

Approx. same scale

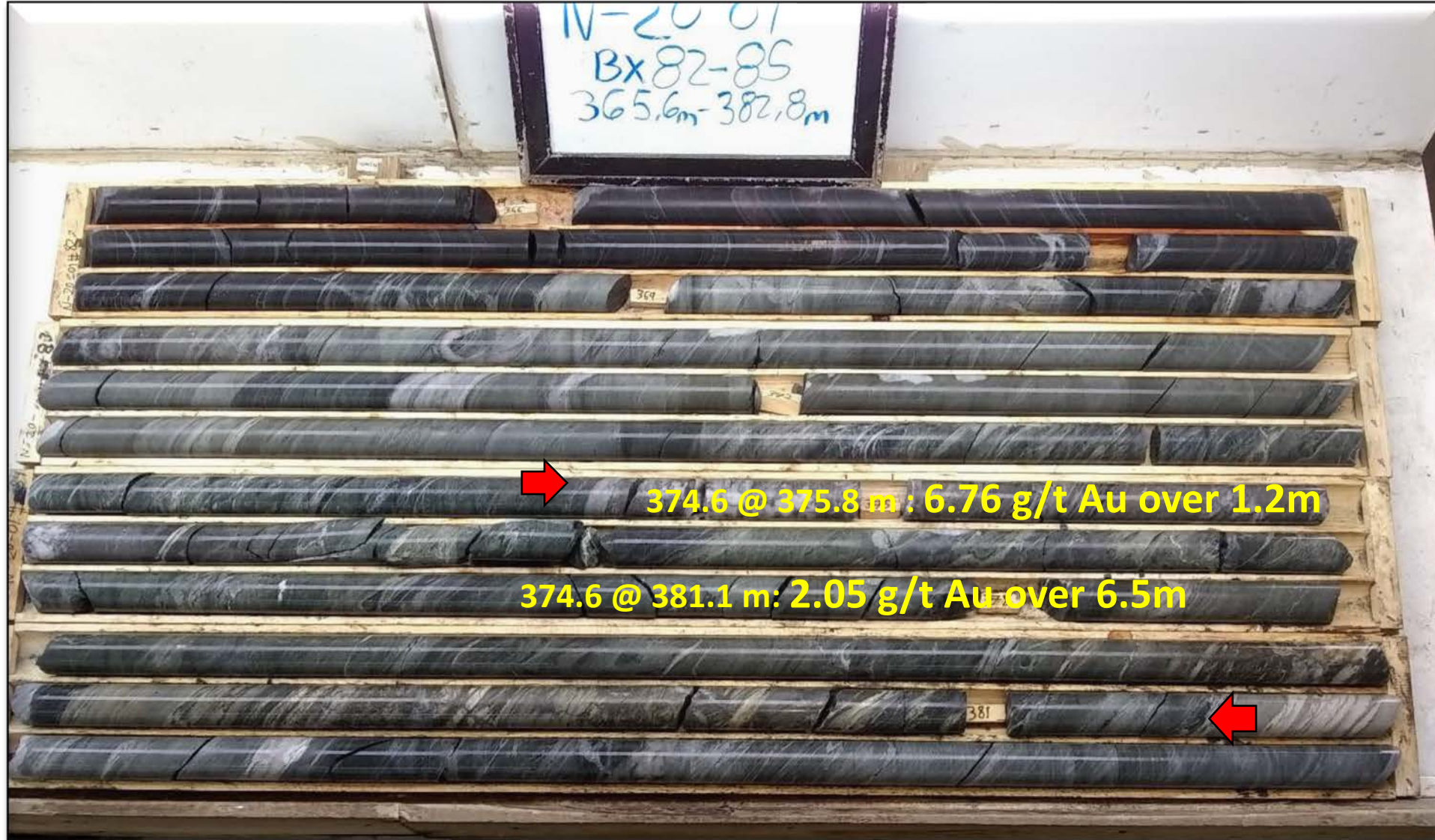


Noyell vs Lapa mine
 (Agnico Eagle,
 872,000 oz Au)

Approx. same scale



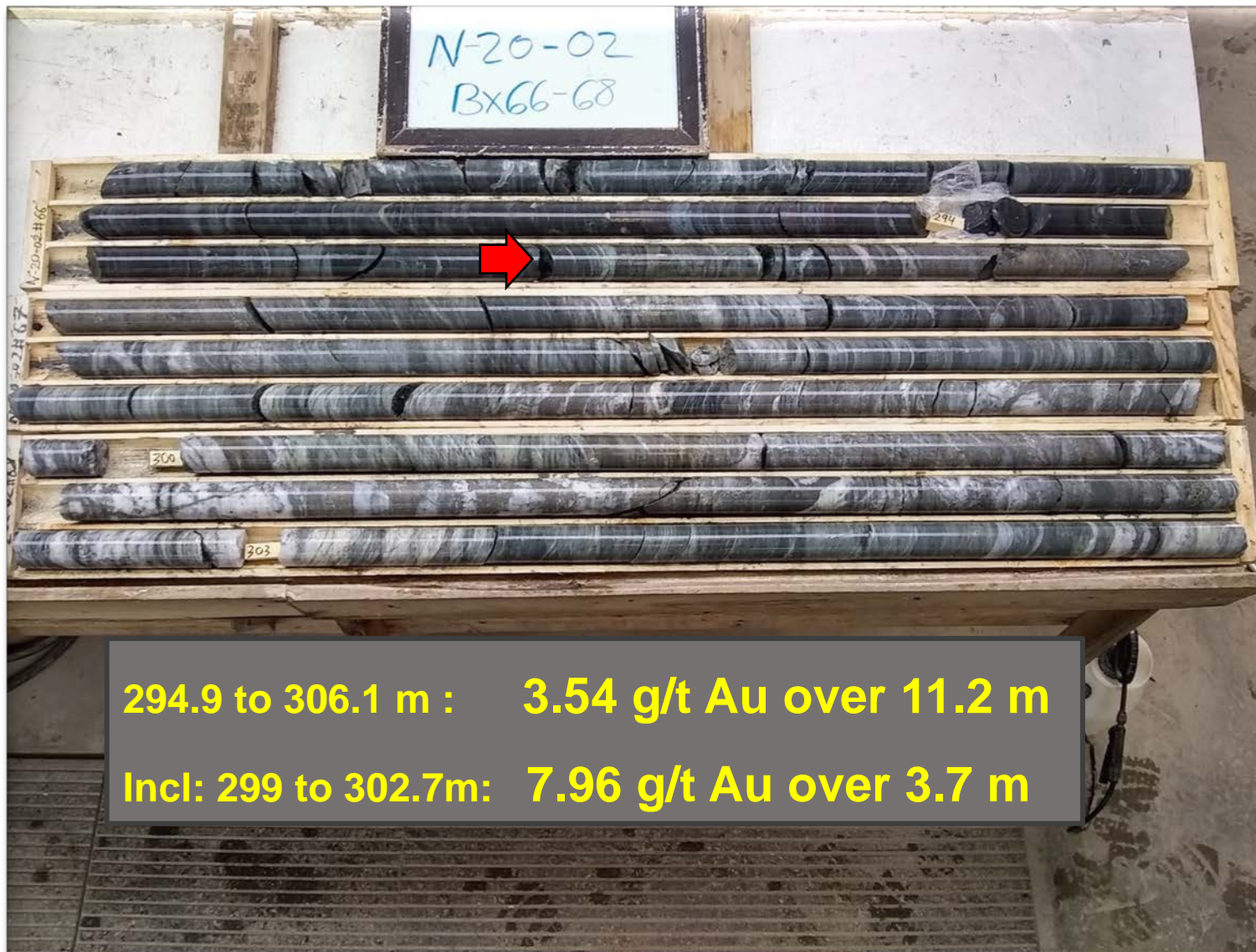
N20-01 – ZONE 1



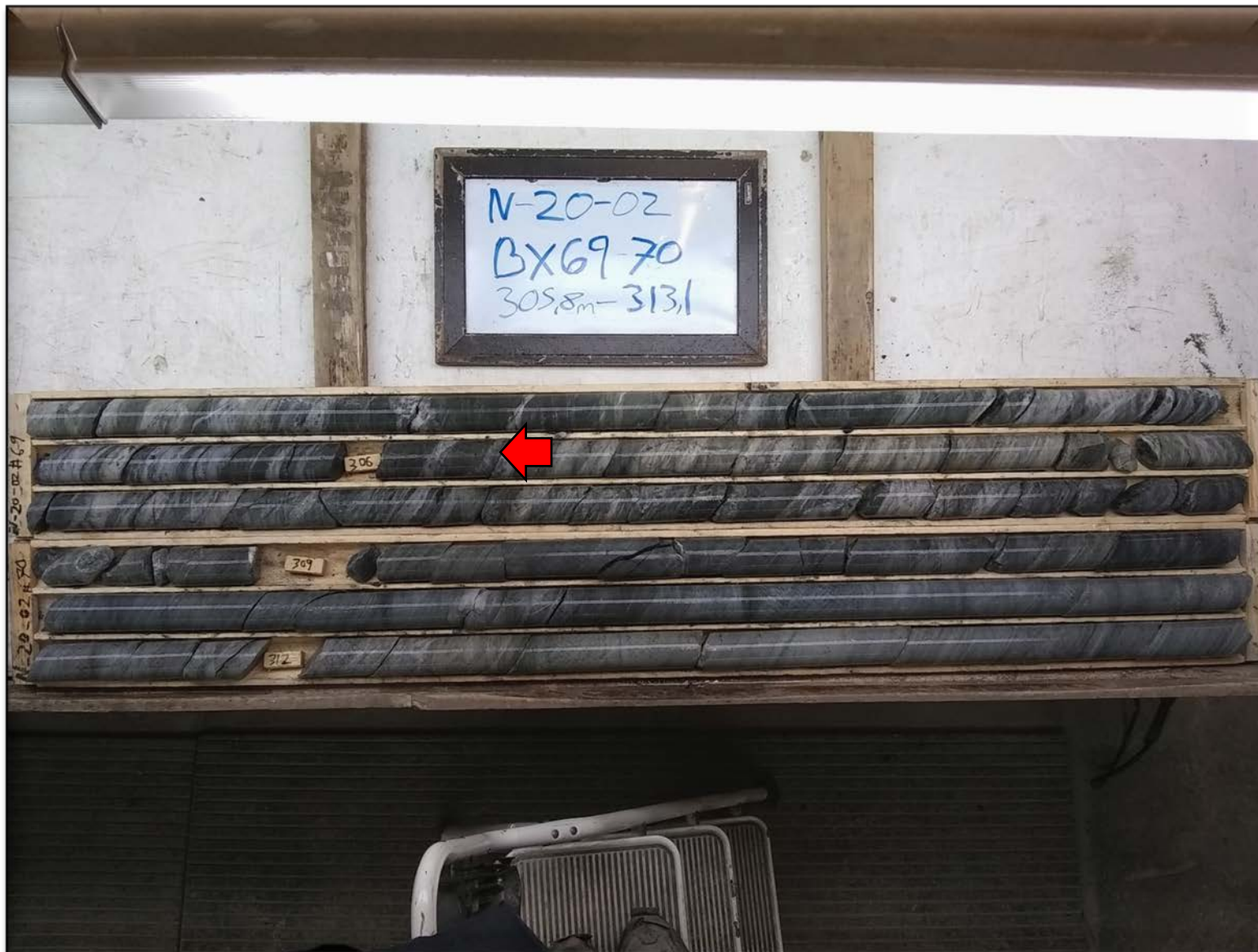
N20-01 – ZONE 1



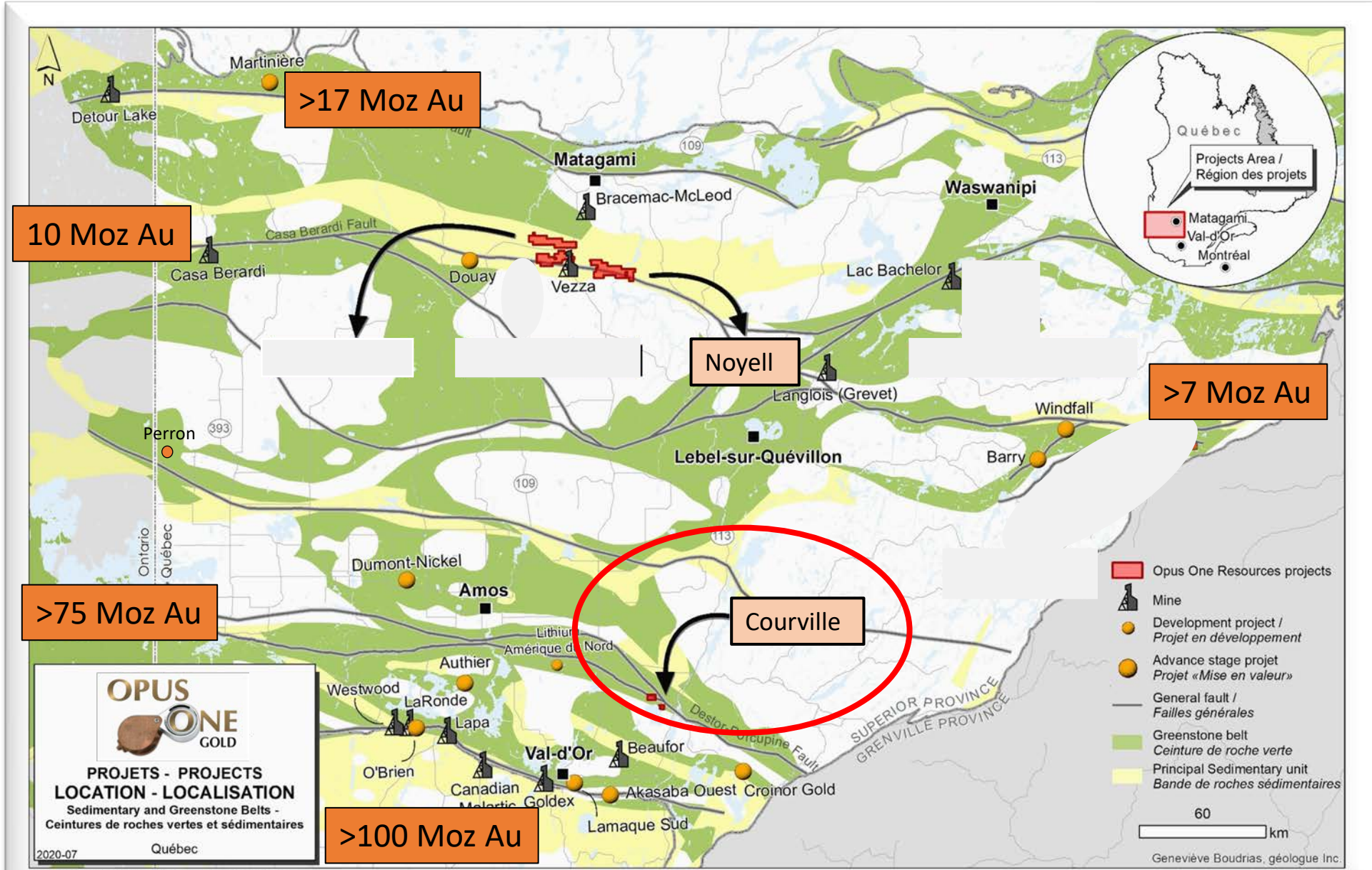
N20-02 – ZONE 1



N20-02 – ZONE 1 (suite)



OPUS ONE GOLD PROPERTIES



OPUS ONE GOLD

PROJETS - PROJECTS
LOCATION - LOCALISATION
 Sedimentary and Greenstone Belts -
 Ceintures de roches vertes et sédimentaires

2020-07 Québec

OPUS ONE GOLD CORP

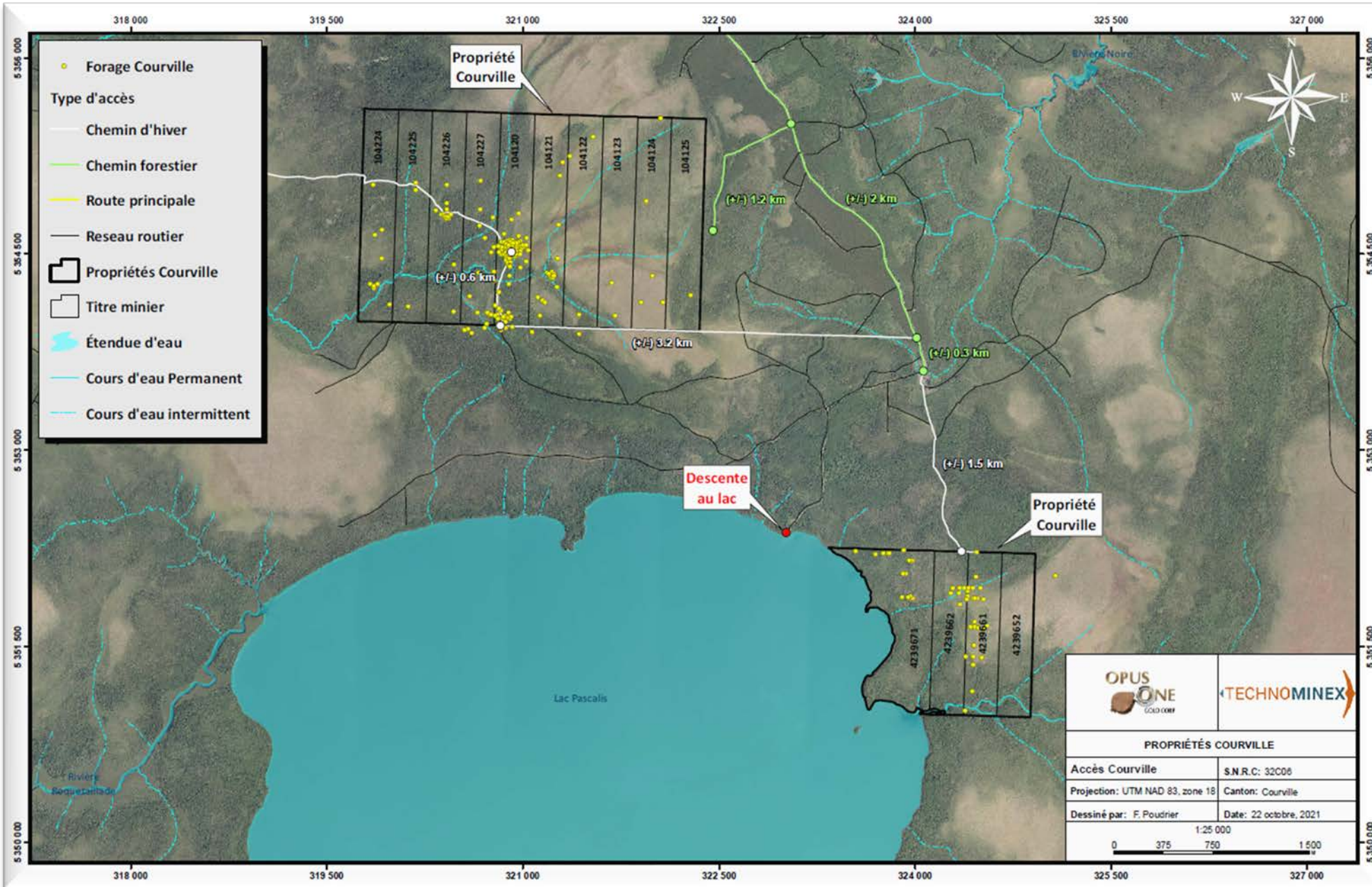
Source: modified from: MERN - Sigéom, Ca_geology_cov

Geneviève Boudrias, géologue Inc.

COURVILLE HISTORICAL DRILLING RESULTS

HOLE	FROM	TO	LENGTH (M)	G/T AU	METAL FACTOR
90-CC-36	5,63	117,63	112,00	0,53	59
90-15	95,37	168,82	73,45	1,25	92
90-31	125,00	220,00	95,00	0,53	50
90-16	52,02	142,66	90,64	0,28	25
90-20	105,85	198,00	92,15	0,81	74
88-3	7,00	152,40	145,40	0,38	55
88-4	5,00	112,00	107,00	1,11	119
87-107	3,51	121,95	118,45	0,79	93

Courville Historical drilling



SECTIONS 3.1 AND 3.2 OF NI 43-101

A qualified person, Pierre O'Dowd P.Ge, has verified the data disclosed, including sampling, analytical, and test data underlying the information or opinions contained in the written disclosure as required by section 3.1 and 3.2 of NI43-101.



Opus One Gold Corp - Capital Structure

- **Symbol: TSX-V: OOR**
- CUSIP Number: 684007
- Outstanding Shares: 207,375,466
- Warrants: 48,300,000
- Options: 16,350,000
- Fully diluted: 272,025,466
- Main institutional shareholders: Quebec Funds (SIDEX, FTQ, Fonds de Développement de la Baie James) > 15%
- Insiders & friends ± 50%



Contacts

00R

Louis Morin
Chief Executive Officer & Director
Tel.: (514) 591-3988
info@OpusOneGold.com

Mike Kinley
President & Chief Financial Officer
Tel.: (902) 826-1579
Fax.: (902) 826-2550
mkinley@winassoc.biz

Address

00R

800 Square Victoria
Suite 3500
Montreal, Quebec,
Canada, H4Z 1E3

Stock Symbol: TSX-V: 00R
Website: www.OpusOneGold.com

