



CORPORATE PRESENTATION OCTOBER 2025

Investing in Advanced
Definition Drilling Stage Gold
Projects

TSX-V: OOR



FORWARD LOOKING STATEMENT

This presentation contains certain “forward-looking statements”, including, but not limited to, statements regarding the Company’s strategic plans, timetables, the evolution of mineral reserves and resources, mine operating costs, capital expenditures, work programs, development plans, exploration programs, objectives, budgets and the possible determination of additional reserves.



Forward looking statements express, at this date, the Company’s plans, estimates, forecasts, projections, expectations or beliefs as to future events and results. Forward-looking statements involve a number of risks and uncertainties, and there can be no assurance that such statements will prove to be accurate. Therefore, actual results and future events could differ materially from those anticipated in such statements.



Risks and uncertainties that could cause results or future events to differ materially from current expectations expressed or implied by the forward-looking statements include, but are not limited to, factors associated with fluctuations in the market price of metals, mining industry risks, exploration risks, environmental risks and hazards, uncertainty as to calculation of mineral reserves, requirement of additional financing or additional permits, authorizations or licenses, and risks of delays in construction and production.

HIGHLIGHTS

❖ District-Scale Gold Project in a Tier 1 Jurisdiction

- 100% ownership of 50 km² in Quebec Abitibi Gold Belt
- Excellent infrastructure: paved highway, grid power, rail and skilled workforce

❖ Premier Gold Mining District

- Noyell Project
 - 15,000 M drilling completed by Opus One Gold Corp
 - Close to existing infrastructures in Casa-Berardi-Douay-Cameron mining district
- Courville Project
 - 100% ownership close to Val D'Or mining district
 - Historical drill programs returned high metal factor values

❖ Strong potential for new discoveries

- Focused on underexplored land package with multiple new targets
- New discoveries in proven gold camp

❖ Right Management Team

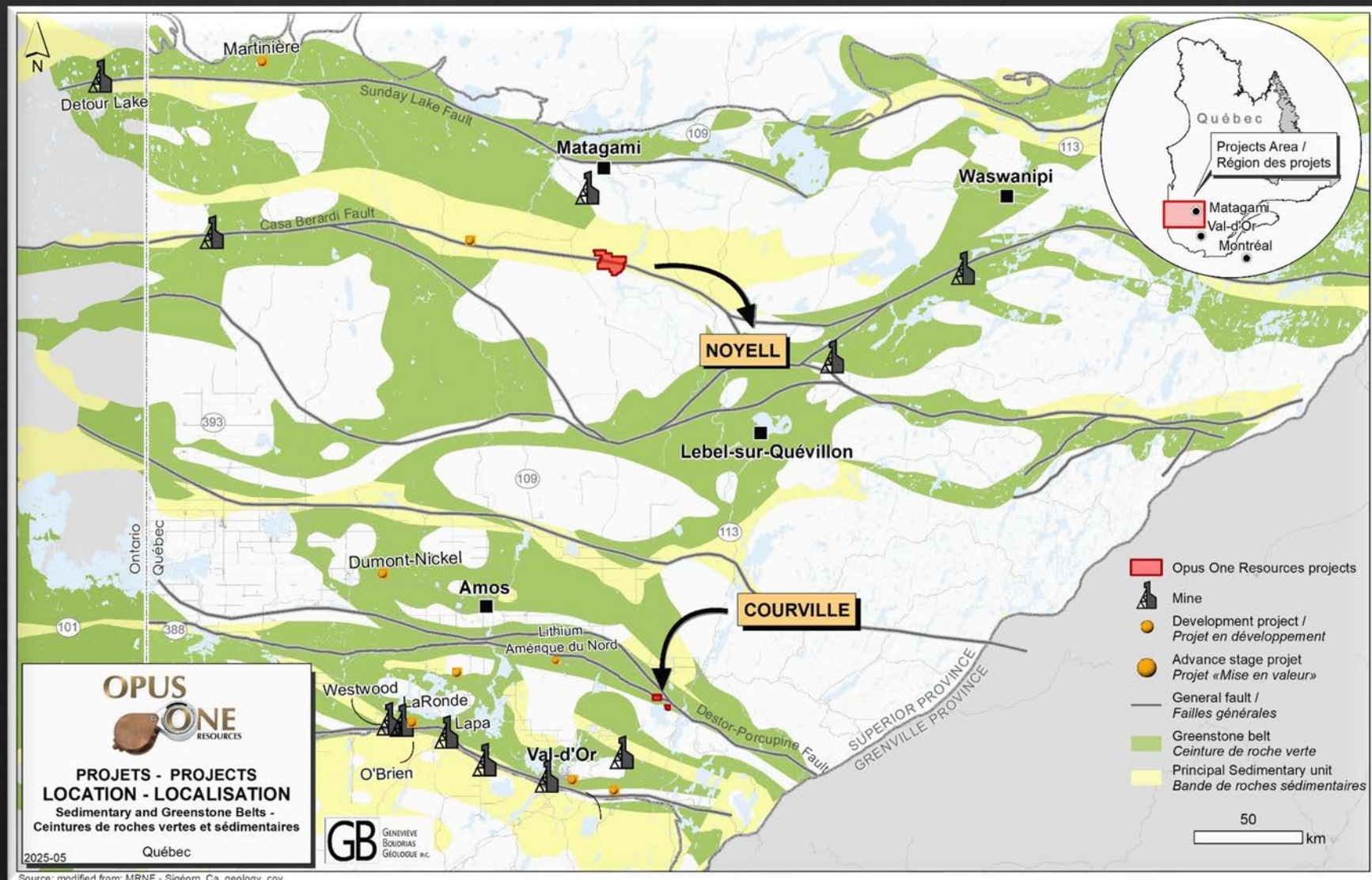
- Successful management and exploration team combining more than 100 years of experience and discoveries in mining sector



RECENT DEVELOPMENTS

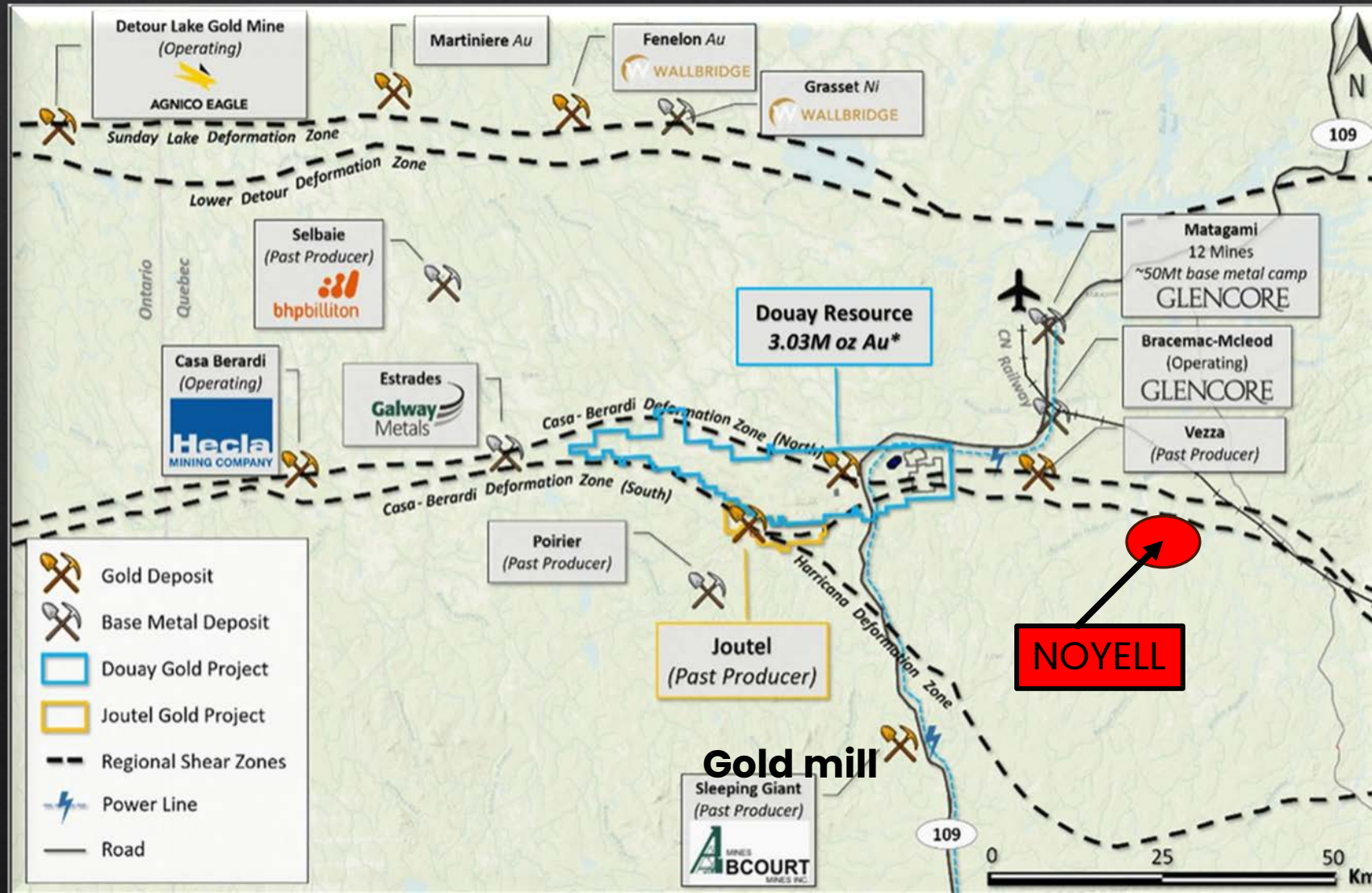
- ❖ Opus One controls 8 km of strike along the highly favorable deformation corridor: Casa-Berardi – Douay-Cameron
- ❖ Acquisition of 100% ownership of Noyell flagship Gold Project in 2024
- ❖ 9,000 Meters drill program in early 2025 following completion of a 5,104 m winter 2021 drilling program on Noyell with significant success following up on 2020 spectacular drilling results
- ❖ 2025 drill program resulted in a major increase of Zone 1 gold mineralization on Noyell property
- ❖ Bio-geochemical surveys on Noyell over the Zone 1 discovery and its extensions: results confirm potential for regional scale gold district

WELL-POSITIONED ASSETS IN PROLIFIC MINING DISTRICTS

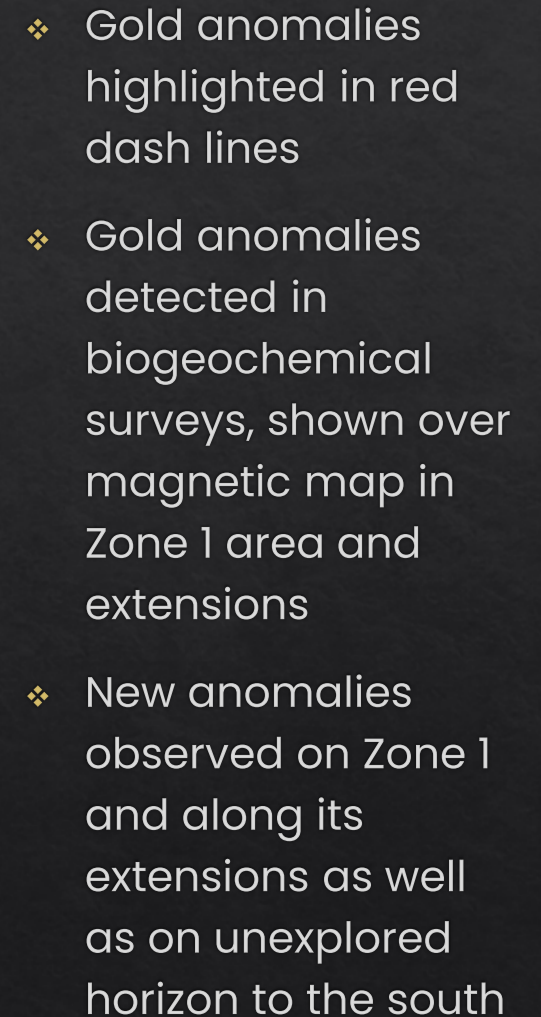


- ❖ Noyell gold flagship property located along Casa-Bérardi deformation Zone, near Matagami, Qc
- ❖ Courville gold property located near the Val d'Or gold district

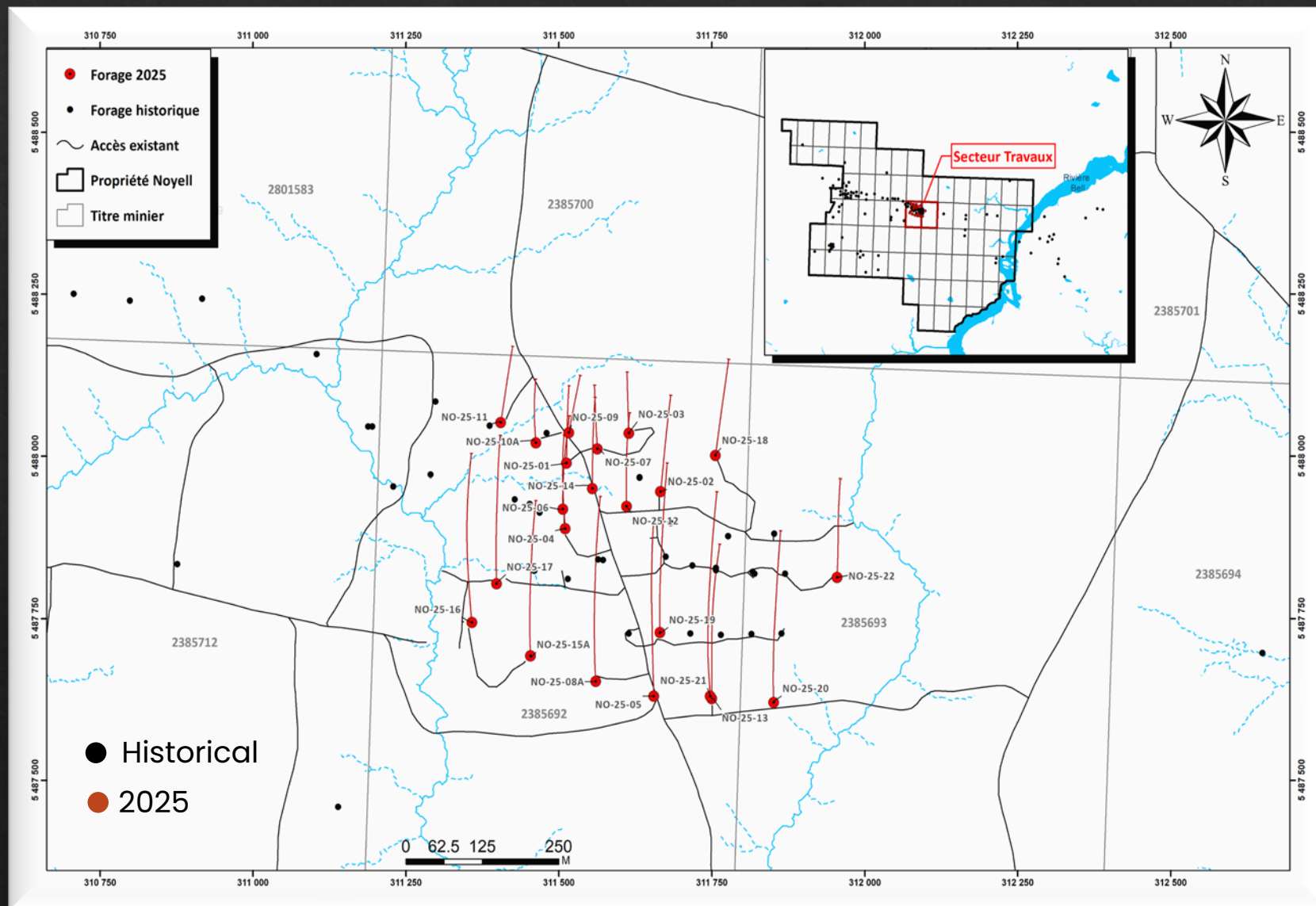
NOYELL PROJECT



- ❖ Strategically located in active multi million ounces gold district near infrastructure and manpower
- ❖ Within the Casa-Berardi belt / Abitibi Greenstone belt – A highly prospective gold region
- ❖ Mining friendly Quebec jurisdiction – close to an operating gold mill and 14km from regional road.

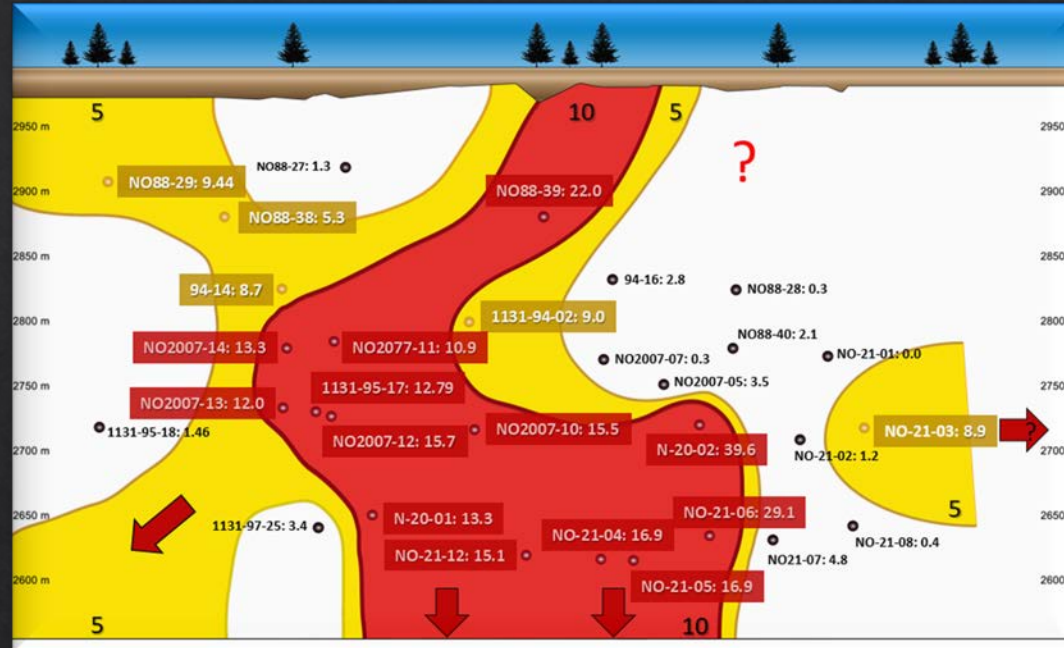


2025 SUCCESSFUL DRILLING PROGRAM



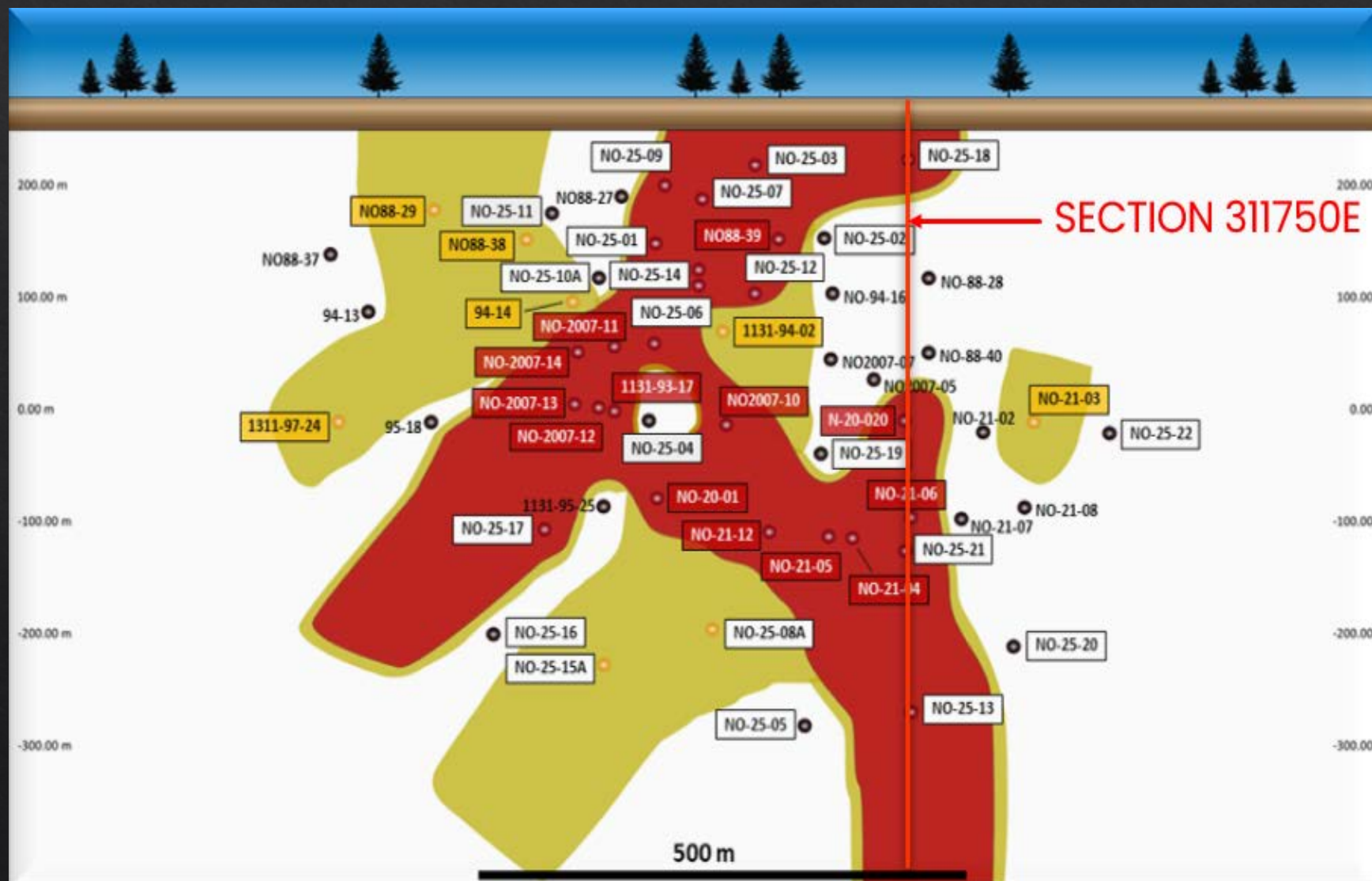
- ❖ 9,000 m of drilling completed in 2025 (in red)
- ❖ Focus was to confirm down-plunge extension of the Zone 1 gold discovery, test potential extensions (east and west) and carry out infill drilling in a specific area.
- ❖ The program also aimed to delineate the potential for a significant gold resource near surface
- ❖ OVERALL, THERE IS STILL LIMITED DRILLING ON ZONE 1

PRE-2025 DRILLING LONGITUDINAL SECTION



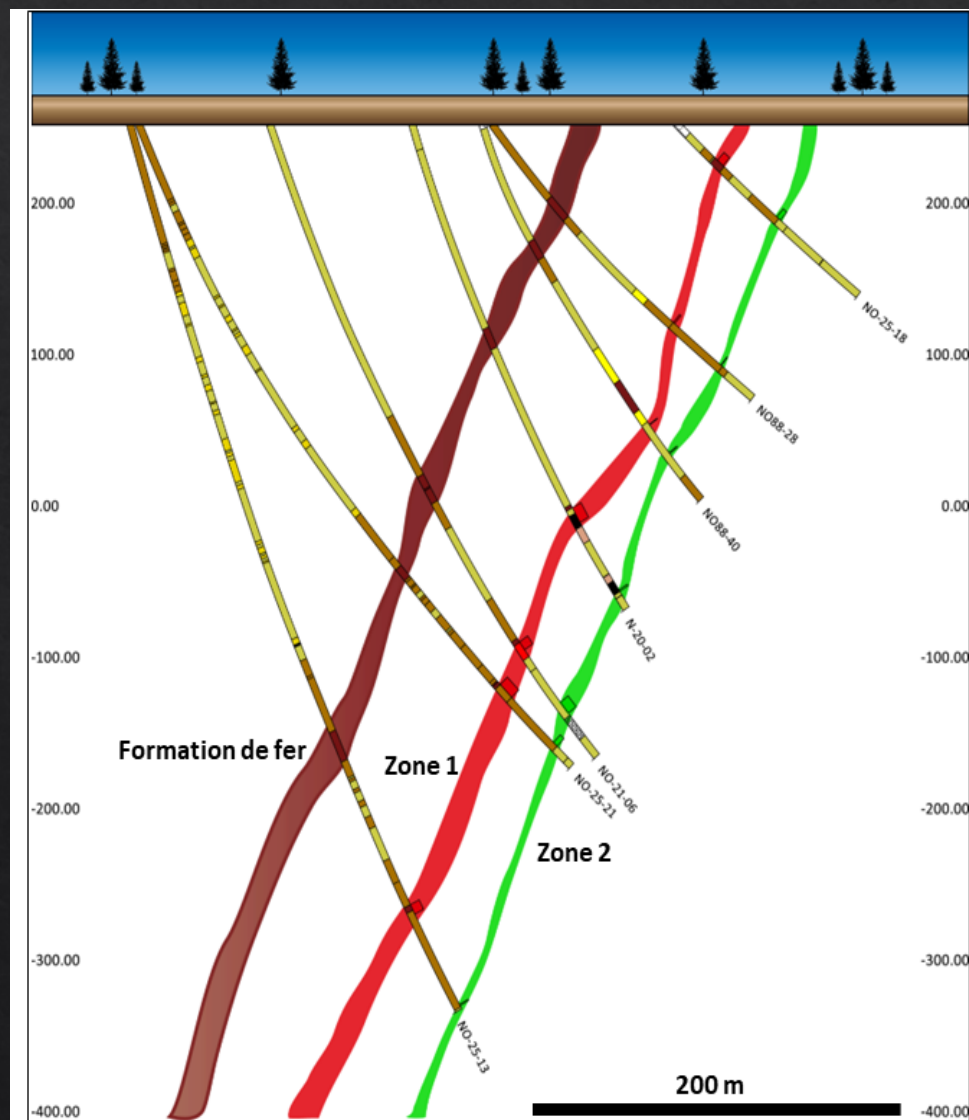
- ❖ Interpretation of zone 1 gold mineralization by the end of 2024
- ❖ High gold grades in red
- ❖ Lower gold grades in yellow

2025 UPDATED LONGITUDINAL SECTION



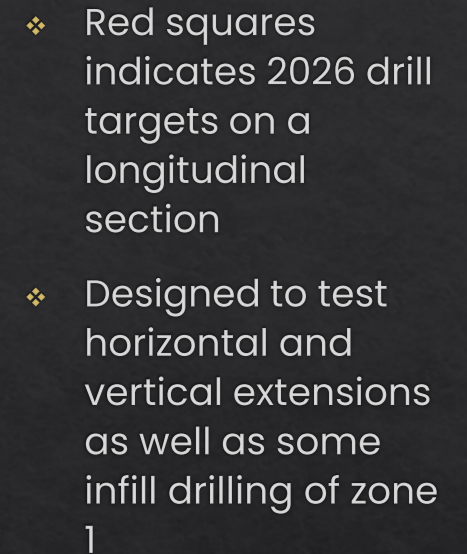
- ❖ New interpretation of zone 1 following 2025 drilling
- ❖ Significant increase in zone 1 gold deposit size
- ❖ High gold grades in red
- ❖ Lower gold grades in yellow
- ❖ Zone 1 remains open in several directions
- ❖ Thick high grade gold intervals outlined near surface
- ❖ High grade cut at depth of 500m vertical in hole no-25-13

CROSS-SECTION ON NOYELL ZONE 1

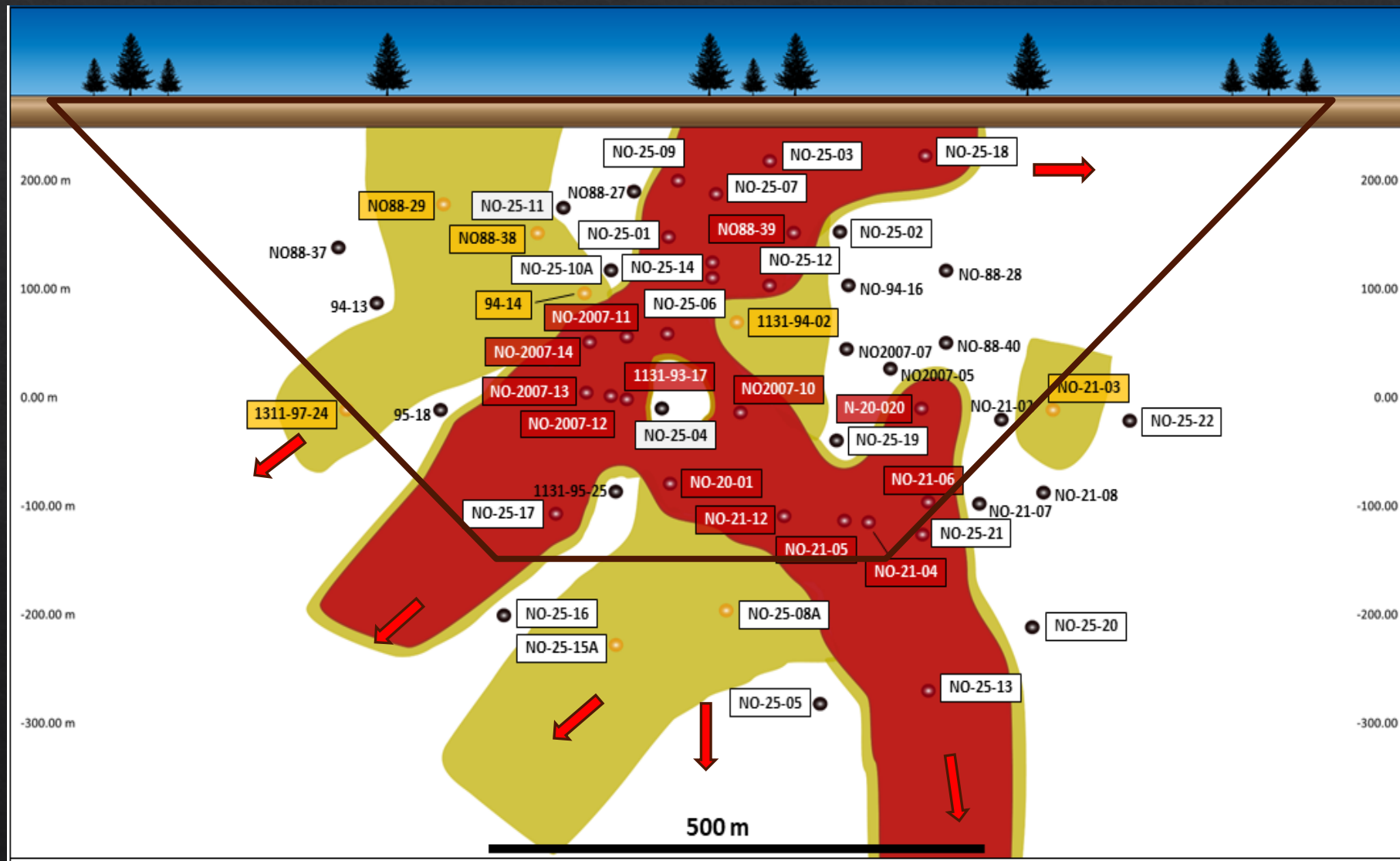


Forage	Zone	Longueur (m)	Au g/t
N-20-02	Zone 1	11.20	3.54
N-20-02	Zone 2	1.20	1.32
NO-21-06	Zone 1	6.50	4.57
NO-25-13	Zone 1	7.10	4.10
NO-25-18	Zone 1	5.50	3.24
NO-25-21	Zone 1	11.90	1.98
NO-25-21	Zone 2	3.70	1.54
NO88-28	Zone 2	0.40	13.36
NO88-40	Zone 1	0.40	5.20
NO88-40	Zone 2	0.90	7.40

- ❖ Zone 1 indicated in red
- ❖ Zone 1 continuous from surface down to 500 m vertically
- ❖ Open at depth
- ❖ Steep dip of zone 1 = easy mining

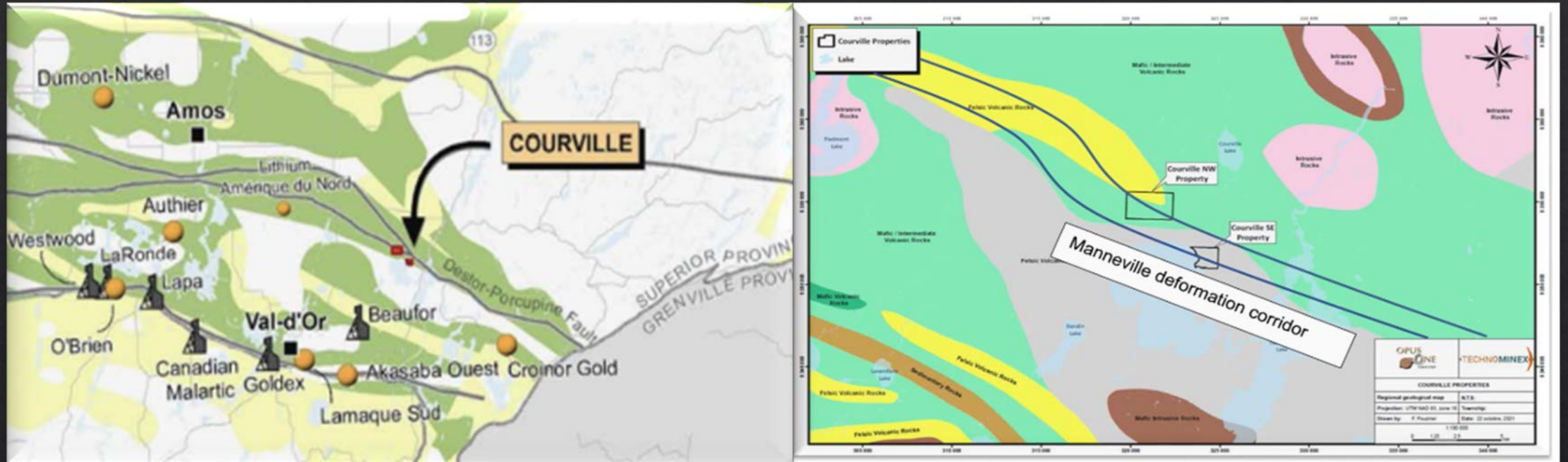


ZONE 1 OPEN-PIT POTENTIAL?



- ❖ Open pit potential viability to be evaluated following near surface successful 2025 drilling

COURVILLE PROPERTY



- ❖ The property, located near the Val d'Or gold mining district, consists of two distinct claim blocks. The main gold mineralization is found on the northwestern claim block.

COURVILLE PROPERTY HISTORICAL DRILL RESULTS

HOLE	FROM	TO	LENGTH (M)	G/T AU	METAL FACTOR
90-CC-36	5,63	117,63	112,00	0,53	59
90-15	95,37	168,82	73,45	1,25	92
90-31	125,00	220,00	95,00	0,53	50
90-16	52,02	142,66	90,64	0,28	25
90-20	105,85	198,00	92,15	0,81	74
88-3	7,00	152,40	145,40	0,38	55
88-4	5,00	112,00	107,00	1,11	119
87-107	3,51	121,95	118,45	0,79	93

- ❖ Historical drill programs returned significant thick low grade gold intervals
- ❖ High metal factor values
- ❖ Potential for future exploration



COMPANY SNAPSHOT

Management

Louis Morin, CEO

Michael Kinley, President & CFO

Board

Louis Morin

Michael Kinley

Patrick Fernet

Charles Chevrete

Christian Paradis

Anthony Croll

Share Structure – TSX-V: OOR

Shares Outstanding 234,059,176

Warrants 25,535,936

Options 22,650,000

Fully Diluted 282,245,112

Ownership

- Institutions > 15%
- Friends and Family > 50%

Head Office: 3500 – 800 Square Victoria, Montreal, Quebec, H4Z 1E3

Louis Morin, CEO & Director

(514) 591-3988

info@OpusOneGold.com

Michael Kinley, President, CFO & Director

(902) 826-1579

mkinley@winassoc.biz

APPENDIX: NOYELL 2025 DRILL RESULTS

Sondage	Zone	De	À	Longueur	Épaisseur vraie	Au (g/t)	FM
NO-25-01	Zone 1	135	142,3	7,3	5,8	4,12	30,10
NO-25-01	Zone 2	206,5	207	0,5	0,41	4,71	2,36
NO-25-02	Zone 1	174,3	174,8	0,5	0,47	1,06	0,53
NO-25-02	Zone 2	184,3	187	2,7	2,52	0,21	0,56
NO-25-03	Zone 1	57,2	63,9	6,7	5,26	3,79	25,39
NO-25-03	Zone 2	123,2	124,2	1	0,8	1,32	1,32
NO-25-04	Zone 1	297,8	298,8	1	0,72	2,47	2,47
NO-25-04	Zone 2	354,6	355,1	0,5	0,37	1,01	0,51
NO-25-05	Zone 1	605,7	606,7	1	0,8	1,14	1,14
NO-25-05	Zone 2	628	628,9	0,9	0,8	0,17	0,16
NO-25-06	Zone 1	232,2	240,6	8,4	6,6	5,57	46,80
NO-25-06	Zone 2	289,2	291	1,8	1,46	0,52	0,93
NO-25-07	Zone 1	95,75	114,7	18,95	15,16	4,22	79,90
NO-25-07	Zone 2	159	161,7	2,7	2,2	3,67	9,90
NO-25-08A	Zone 1	523,9	527,8	3,9	3,25	2,34	9,11
NO-25-08A	Zone 2	581,8	582,8	1	0,85	0,04	0,04
NO-25-09	Zone 1	80,8	86,8	6	5,16	2,32	13,92
NO-25-09	Zone 2	115,9	117,1	1,2	1,04	6,63	7,95
NO-25-10A	Zone 1	160,3	162,5	2,2	1,54	1,54	3,38
NO-25-10A	Zone 3	175,2	178,4	3,2	2,29	2,63	8,41
NO-25-10A	Zone 2	203	210,3	7,3	5,42	1,99	14,49
NO-25-11	Zone 1	111,8	113,6	1,8	1,53	1,56	2,81
NO-25-11	Zone 2	161,7	165,8	4,1	3,54	2,23	9,13
NO-25-12	Zone 1	188,1	194,7	6,6	5,34	2,24	14,78
NO-25-12	Zone 2	250,5	251,2	0,7	0,59	0,04	0,03
NO-25-13	Zone 1	572,8	579,9	7,1	5,34	4,10	29,12
NO-25-13	Zone 2	647,7	648,6	0,9	0,7	0,98	0,88

NO-25-14	Zone 1	165	170,2	5,2	4,16	8,96	46,60
NO-25-14	Zone 1	179,2	189,1	9,9	7,96	2,91	28,80
NO-25-14	Zone 2	221,2	226,8	5,6	4,6	1,02	5,70
NO-25-15A	Zone 1	536	539	3	2,34	1,73	5,20
NO-25-15A	Zone 2						
NO-25-16	Zone 1	511	513	2	1,61	1,36	2,72
NO-25-16	Zone 2	542,8	543,9	1,1	0,9	0,06	0,06
NO-25-17	Zone 1	411,5	416,7	5,2	4,16	3,92	20,40
NO-25-17	Zone 2	471	473,2	2,2	1,82	3,30	7,27
NO-25-18	Zone 1	66,3	71,8	5,5	5,08	3,24	17,80
NO-25-18	Zone 2	123,1	126,5	3,4	3,18	0,28	0,96
NO-25-19	Zone 1	375,4	376,1	0,7	0,61	2,06	1,44
NO-25-19	Zone 2	422,6	424,3	1,7	1,5	1,33	2,27
NO-25-20	Zone 1	524,2	527,7	3,5	2,79	0,07	0,26
NO-25-20	Zone 2	586,2	587,2	1	0,83	0,41	0,41
NO-25-21	Zone 1	474,8	486,7	11,9	10,58	1,98	23,60
NO-25-21	Zone 2	529	532,7	3,7	3,36	1,54	5,71
NO-25-22	Zone 1	308,1	309	0,9	0,65	0,30	0,27
NO-25-22	Zone 2	364,5	365,2	0,7	0,52	0,12	0,09

- ❖ Significant metal factor values in 2025 drilling on zone 1, including in shallow drilling